

FOR SALE

FORMER RETAIL BANK BRANCH

10839 BUCKLEY HALL ROAD • MATHEWS, VIRGINIA



PROPERTY FEATURES

- Former retail bank branch with a two (2) lane drive-thru window.
- The building has been well maintained and is in excellent condition on a beautiful landscaped lot.
- Situated on Route 198 across from the M&M Building Supply in the heart of Mathews.
- Less than ¼ mile from Main Street with Food Lion, Ace Hardware, Hardees and Subway.

PROPERTY HIGHLIGHTS

ASKING PRICE:	TBD
SQUARE FEET	± 4,500
ACRES:	± 0.92
ZONING:	VMU (Village Mixed-Use)
PARKING SPACES:	30

[WATCH PROPERTY VIDEO](#)



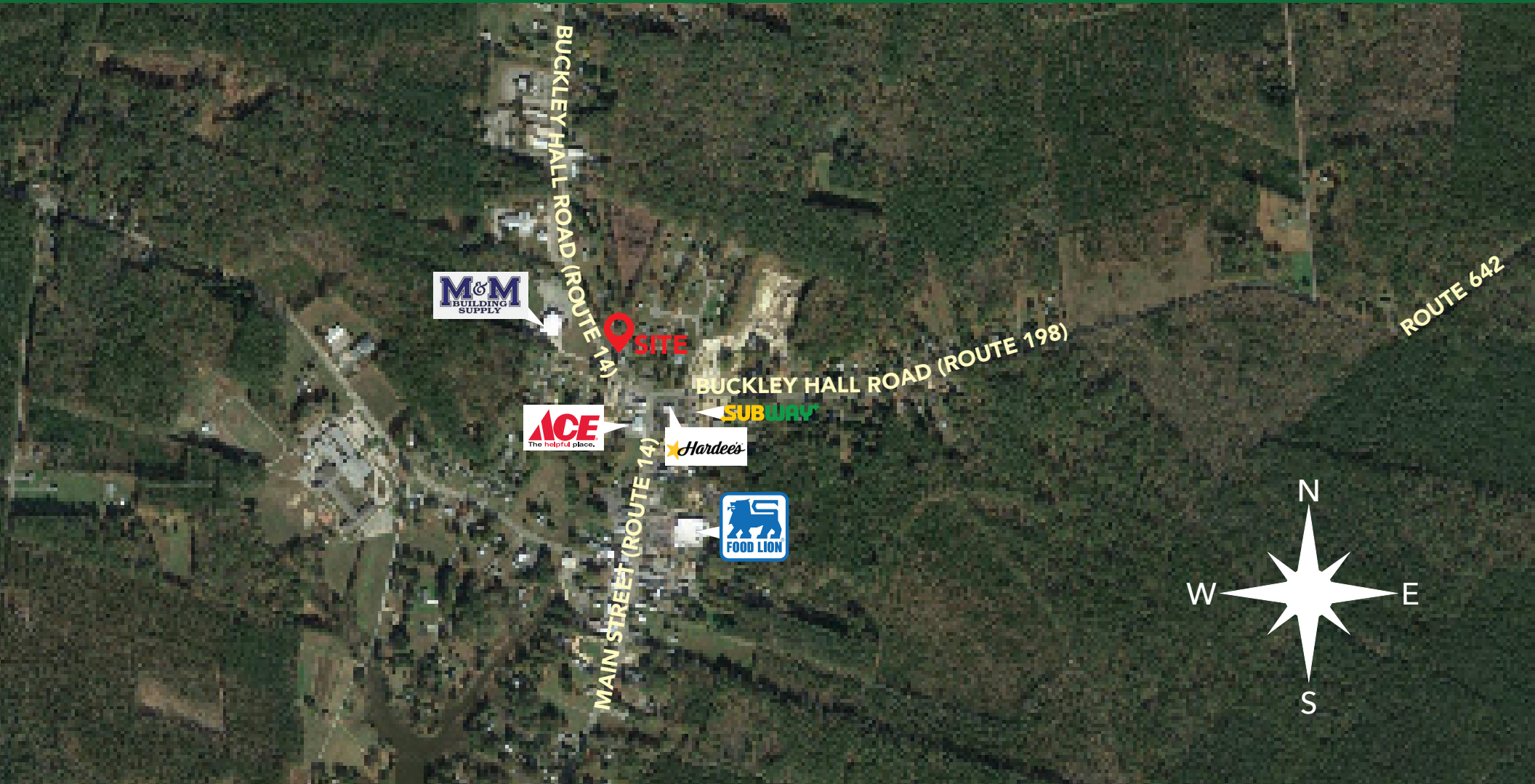
Commercial Real Estate Brokerage
423 N. Boundary Street, Suite 200
Williamsburg, VA 23185
www.rjsassocs.com

Joseph P. Singley
P / 757.229.3139
E / joe@rjsassocs.com

FOR SALE

FORMER RETAIL BANK BRANCH

10839 BUCKLEY HALL ROAD • MATHEWS, VIRGINIA



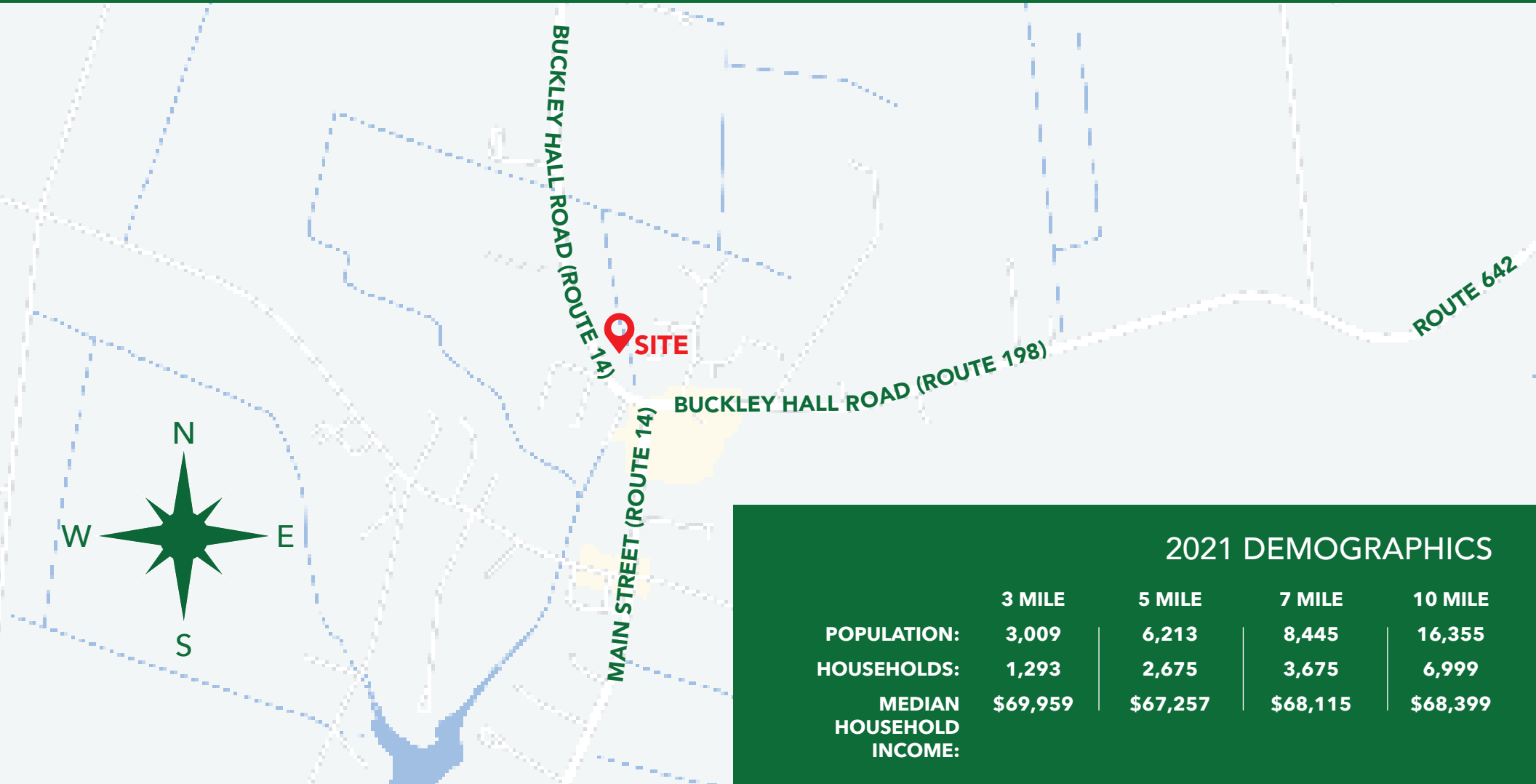
Commercial Real Estate Brokerage
423 N. Boundary Street, Suite 200
Williamsburg, VA 23185
www.rjsassoc.com

Joseph P. Singley
P / 757.229.3139
E / joe@rjsassoc.com

FOR SALE

FORMER RETAIL BANK BRANCH

10839 BUCKLEY HALL ROAD • MATHEWS, VIRGINIA



2021 DEMOGRAPHICS

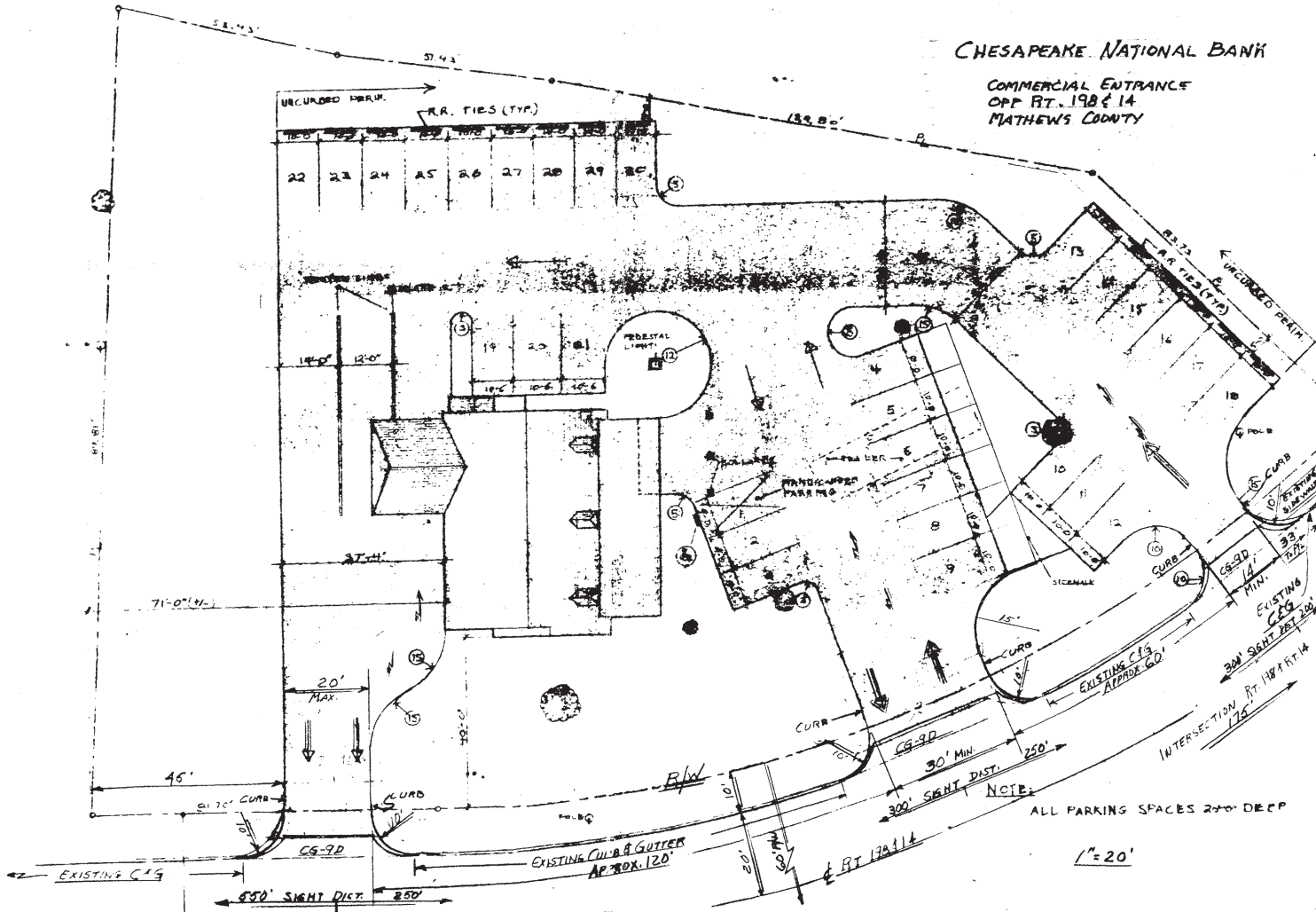
	3 MILE	5 MILE	7 MILE	10 MILE
POPULATION:	3,009	6,213	8,445	16,355
HOUSEHOLDS:	1,293	2,675	3,675	6,999
MEDIAN HOUSEHOLD INCOME:	\$69,959	\$67,257	\$68,115	\$68,399



Commercial Real Estate Brokerage
423 N. Boundary Street, Suite 200
Williamsburg, VA 23185
www.rjsassocs.com

Joseph P. Singley
P / 757.229.3139
E / joe@rjsassocs.com

FOR SALE
FORMER RETAIL BANK BRANCH
 10839 BUCKLEY HALL ROAD • MATHEWS, VIRGINIA



The notes labeling the building and surrounding parking area with ingress/egress are approximate locations and were not inserted by surveyor.



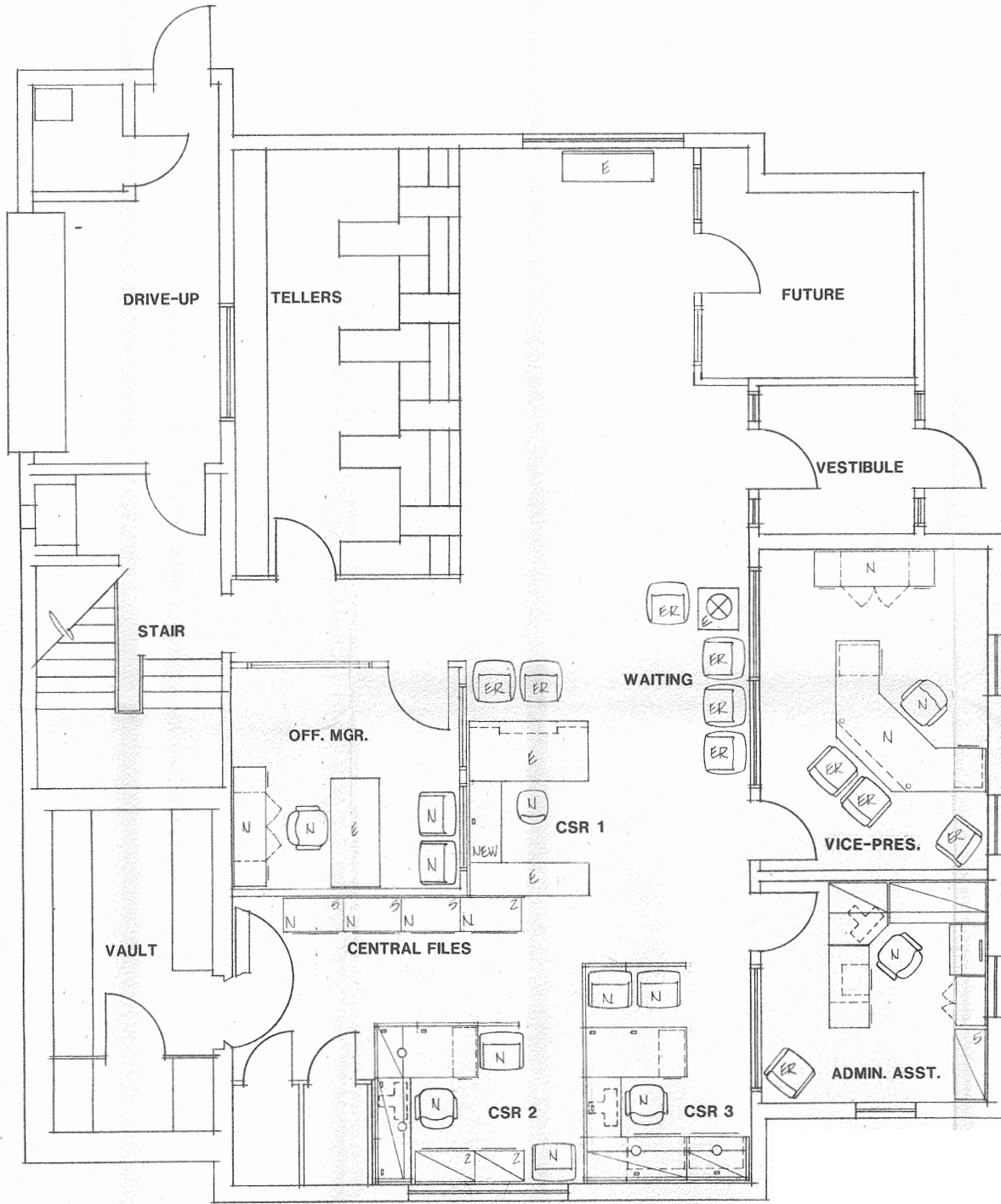
Commercial Real Estate Brokerage
 423 N. Boundary Street, Suite 200
 Williamsburg, VA 23185
 www.rjsassocs.com

Joseph P. Singley
 P / 757.229.3139
 E / joe@rjsassocs.com

FOR SALE

FORMER RETAIL BANK BRANCH

10839 BUCKLEY HALL ROAD • MATHEWS, VIRGINIA



FIRST FLOOR LAYOUT

AREA: ± 2,536 SF



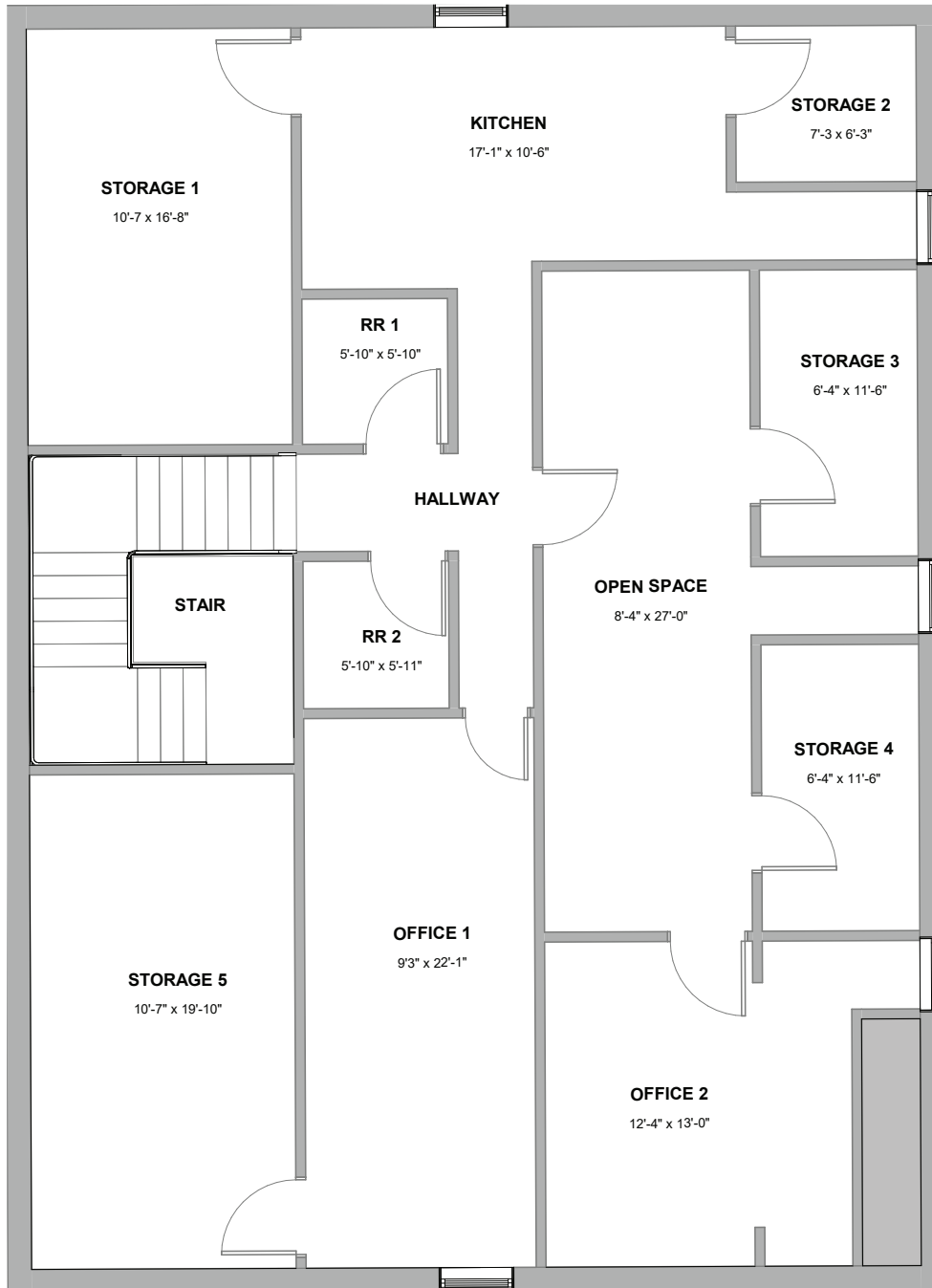
Commercial Real Estate Brokerage
423 N. Boundary Street, Suite 200
Williamsburg, VA 23185
www.rjsassocs.com

Joseph P. Singley
P / 757.229.3139
E / joe@rjsassocs.com

FOR SALE

FORMER RETAIL BANK BRANCH

10839 BUCKLEY HALL ROAD • MATHEWS, VIRGINIA



SECOND FLOOR LAYOUT

AREA: ± 1,944 SF



Commercial Real Estate Brokerage
423 N. Boundary Street, Suite 200
Williamsburg, VA 23185
www.rjsassocs.com

Joseph P. Singley
P / 757.229.3139
E / joe@rjsassocs.com