



## Property Features

- Excellent restaurant/retail opportunity located in the heart of downtown Williamsburg.
- Prince George Commons is a ±16,400 square foot two-story mixed use building situated on the eastern corner of the intersection of Armistead Avenue and Prince George Street.
- Property is centrally located within the City of Williamsburg and is two blocks northwest of Colonial Williamsburg and Merchants Square which contains over 40 restaurants and retailers.
- The College of William & Mary is one block south of Prince George Commons.
- The City of Williamsburg Municipal Complex is two blocks north of Prince George Commons.

## Highlights

<b>Rental Rate</b>	\$25.00/SF NNN
<b>Square Footage</b>	Suite 105 - 1,370 SF
<b>Zoning</b>	B-1



## Map

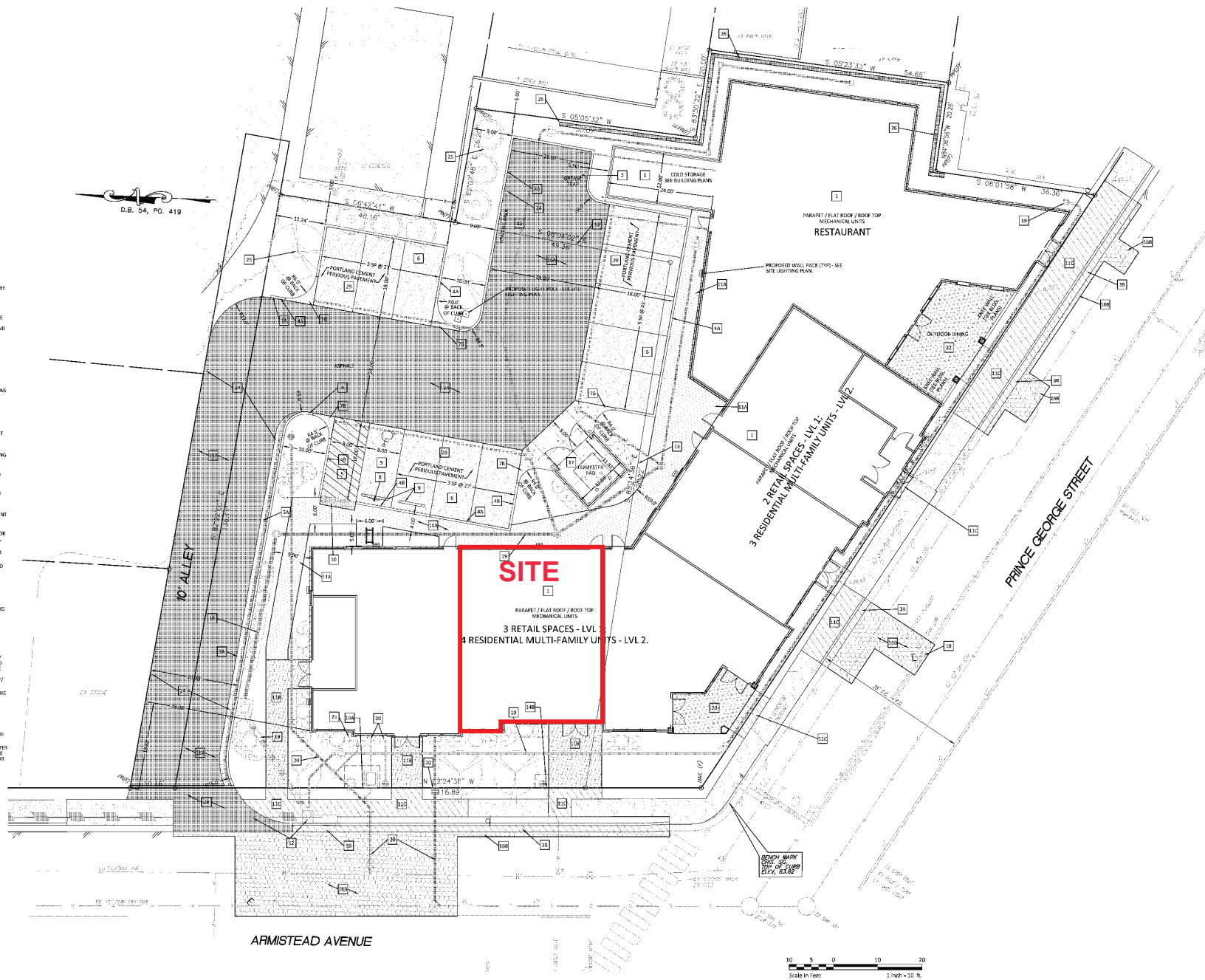
Walking distance to the College of William & Mary and Colonial Williamsburg

The College of William & Mary has an undergraduate enrollment of ±5,700 and ±2,000 law and graduate students.

2016 Demographics	3 Mile	5 Mile	7 Mile
Total Population	36,663	67,644	85,060
Total Households	13,786	26,246	32,789
Median Household Income	\$62,233	\$72,891	\$72,337

FOR LEASE

521 Prince George Street  
Williamsburg, Virginia 23185



SITE PLAN

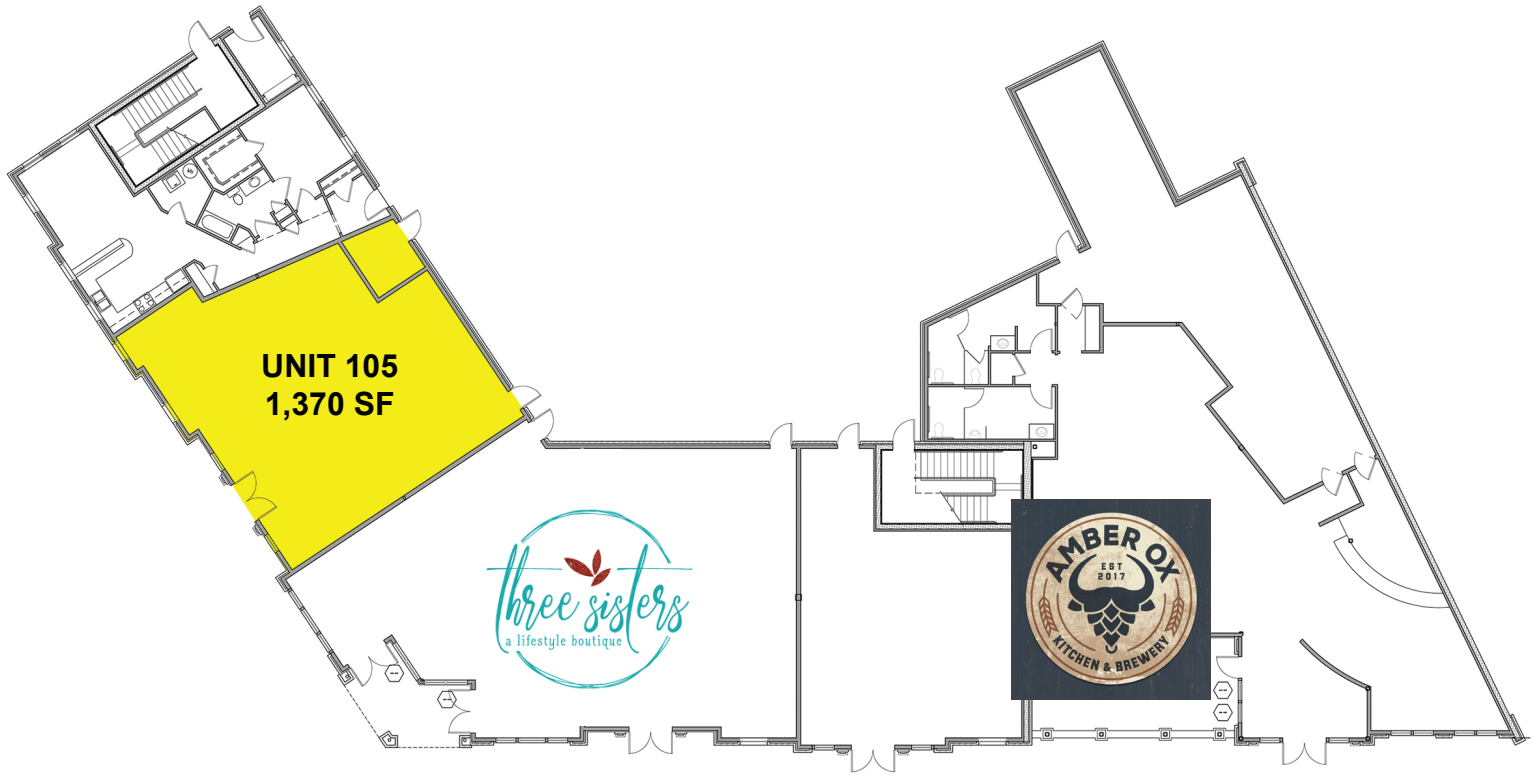
Joseph P. Singley  
(757) 229-3139  
Fax (757) 220-2475  
joe@rjsassocs.com



Commercial Real Estate Brokerage  
423 N. Boundary Street, Suite 200  
Williamsburg, VA 23185  
www.rjsassocs.com

**FOR LEASE**

521 Prince George Street  
Williamsburg, Virginia 23185



**FIRST FLOOR PLAN**

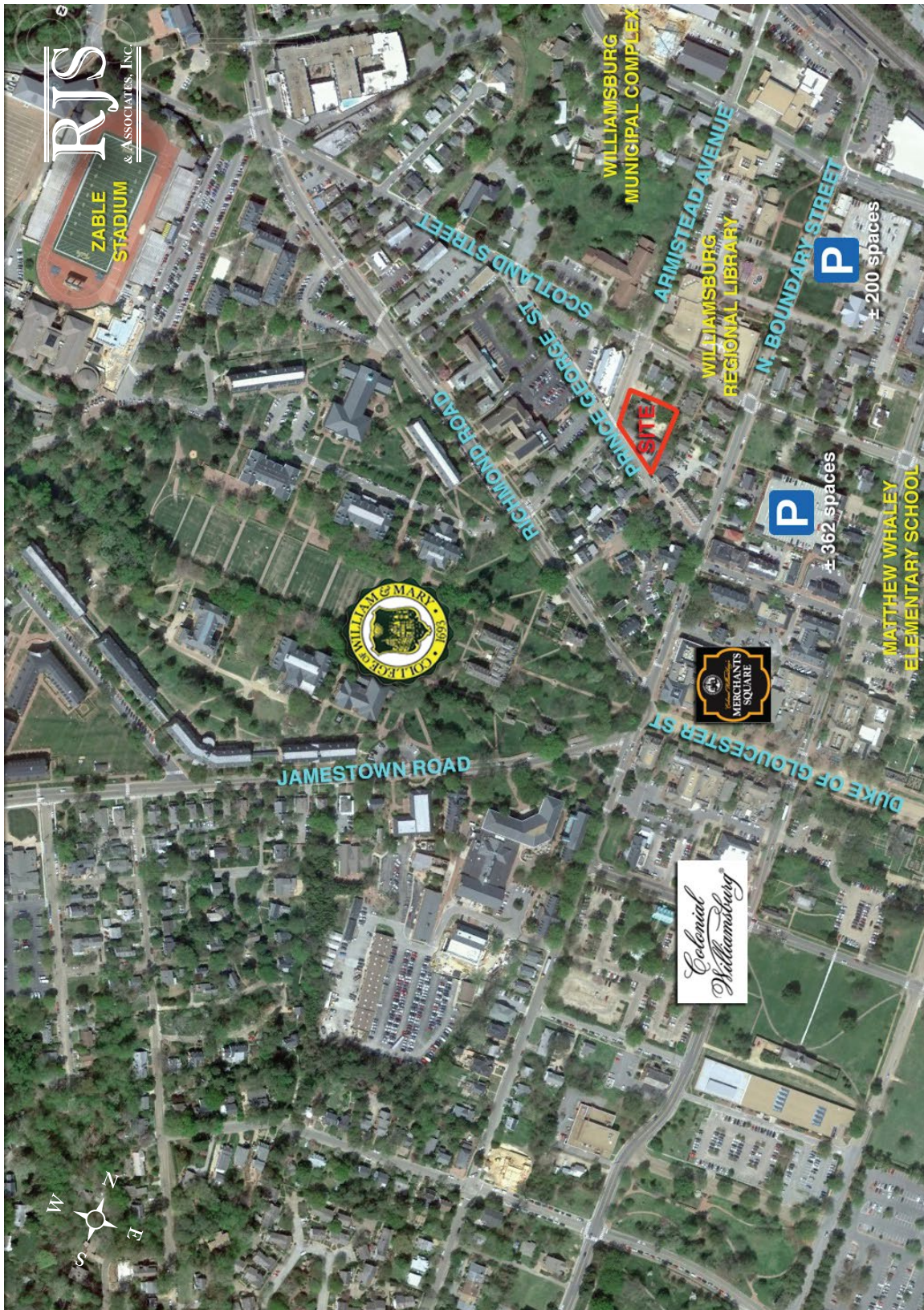
**Joseph P. Singley**  
(757) 229-3139  
Fax (757) 220-2475  
joe@rjsassocs.com

**RJS**  
& ASSOCIATES, INC.

**Commercial Real Estate Brokerage**  
423 N. Boundary Street, Suite 200  
Williamsburg, VA 23185  
www.rjsassocs.com

# FOR LEASE

521 Prince George Street  
Williamsburg, Virginia 23185



Joseph P. Singley  
(757) 229-3139  
Fax (757) 220-2475  
joe@rjsassocs.com



Commercial Real Estate Brokerage  
423 N. Boundary Street, Suite 200  
Williamsburg, VA 23185  
www.rjsassocs.com

# FOR LEASE

521 Prince George Street  
Williamsburg, Virginia 23185



Joseph P. Singley  
(757) 229-3139  
Fax (757) 220-2475  
joe@rjsassocs.com



Commercial Real Estate Brokerage  
423 N. Boundary Street, Suite 200  
Williamsburg, VA 23185  
www.rjsassocs.com