

Commercial Property/Land FOR SALE



1115 LIGHTFOOT ROAD

Williamsburg, VA 23188

- Excellent office/retail opportunity.
- The property is conveniently located off of Interstate 64 and Route 199 in the Lightfoot area of Williamsburg. This area has become a regional retail hub for the Williamsburg market and its neighboring counties.
- Super Wal-Mart, Lowes, Home Depot, the Williamsburg Pottery, and the new Sentara Williamsburg Regional Medical Center are all located within one mile of the property.

LAND:

1.08 Acres

SALE PRICE:

\$280,000

ZONING:

E-0 - Economic Opportunity

FRONTAGE:

± 218 ft. of frontage along Lightfoot Road.

RJS & Associates. Inc.

Commercial Real Estate
Brokerage

423 N. Boundary Street, Ste 200
Williamsburg, Virginia 23185-5629

RJS
& ASSOCIATES, INC.

For more Information
Contact:

Joseph P. Singley

(757) 229-3139

Fax (757) 220-2475

joe@rjsassoc.com

1115 LIGHTFOOT ROAD

Williamsburg, VA 23188



- ± 1/2 Mile from I-64 via Rt. 199.
- ± 1 Mile East of Williamsburg Pottery Factory.
- ± 5 Miles West of Colonial Williamsburg.
- 2016 Demographics:

	3 Miles	5 Miles	7 Miles
Total Population:	15,078	34,064	67,879
Total Households:	6,042	13,908	25,926
Median Household Income:	\$58,276	\$61,296	\$64,987

RJS & Associates. Inc.

Commercial Real Estate
Brokerage

423 N. Boundary Street, Ste 200
Williamsburg, Virginia 23185-5629

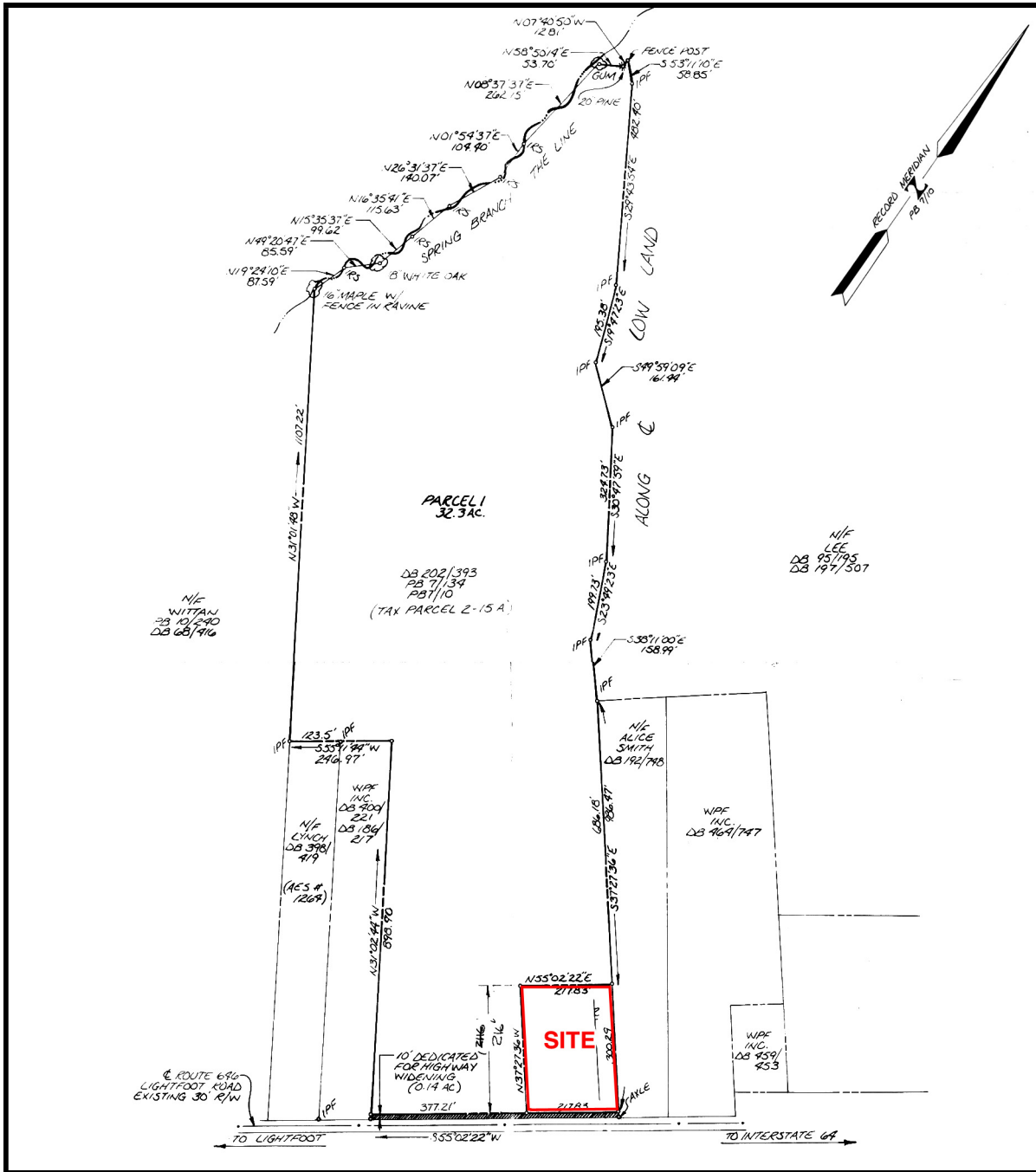


For more Information
Contact:

Joseph P. Singley
(757) 229-3139
Fax (757) 220-2475
joe@rjsassoc.com

1115 LIGHTFOOT ROAD

Williamsburg, VA 23188



PLAT

RJS & Associates. Inc.

Commercial Real Estate
Brokerage

423 N. Boundary Street, Ste 200

Williamsburg, Virginia 23185-5629



For more Information

Contact:

Joseph P. Singley

(757) 229-3139

Fax (757) 220-2475

joe@rjsassoc.com