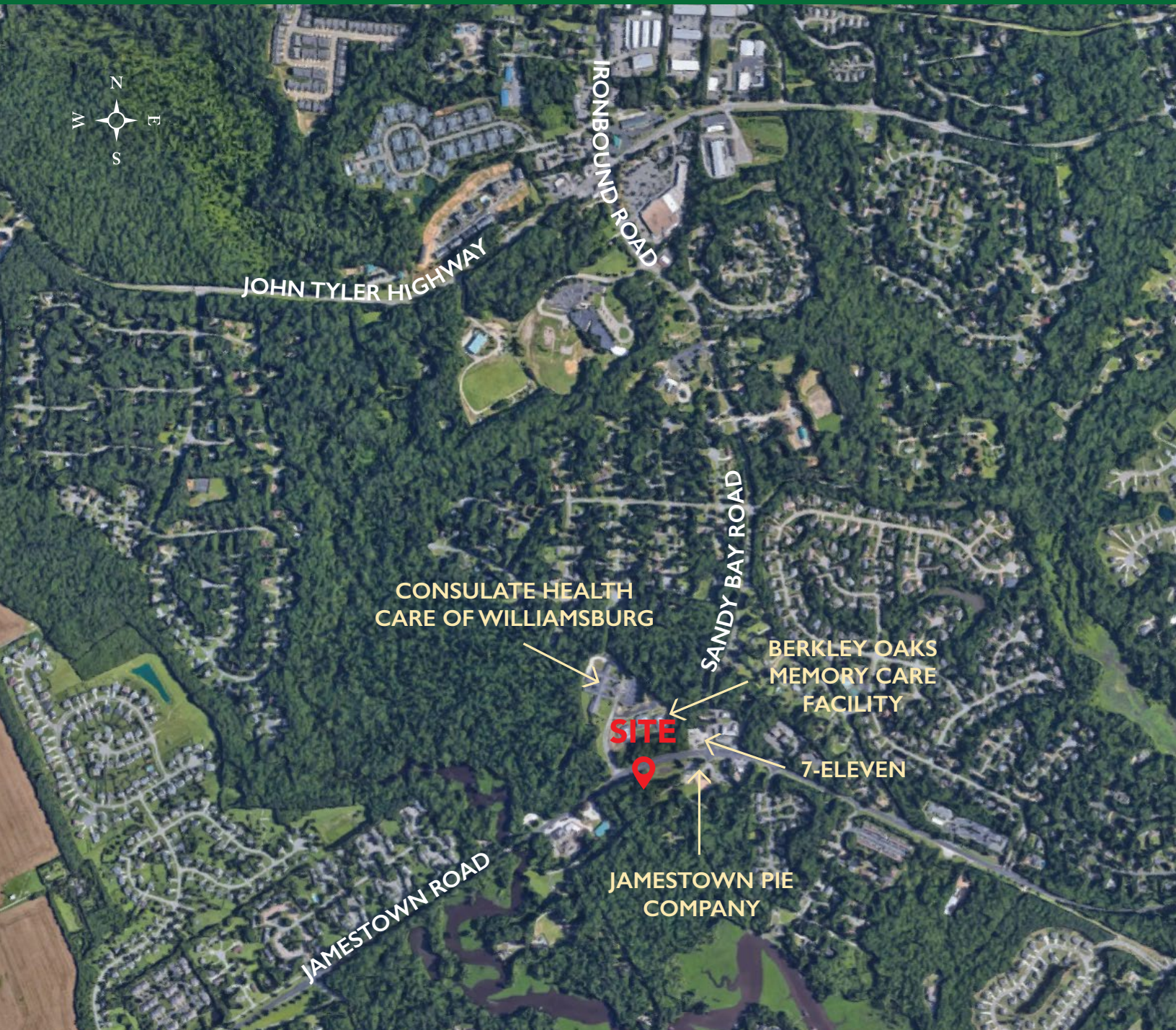


# COMMERCIAL LAND FOR SALE

1812 JAMESTOWN ROAD, WILLIAMSBURG VA 23185



Commercial Real Estate Brokerage  
423 N. Boundary Street, Suite 200  
Williamsburg, VA 23185  
[www.rjsassocs.com](http://www.rjsassocs.com)

Robert J. Singley, Jr. CCIM  
P / 757.229.3139  
F / 757.220.2475  
E / [rjsjr@rjsassocs.com](mailto:rjsjr@rjsassocs.com)

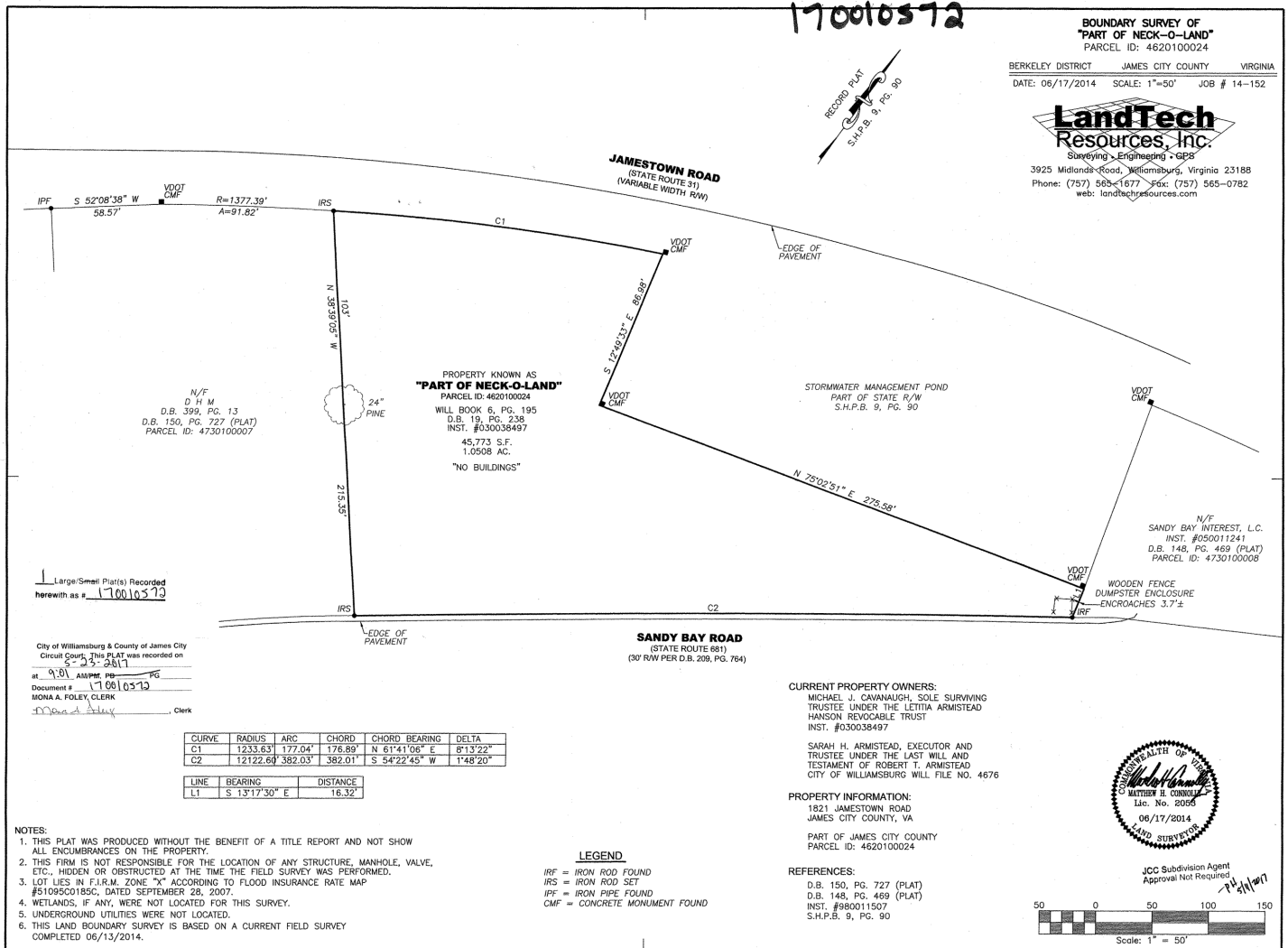


# PROPERTY FEATURES

- Commercial opportunity along the main corridor to Jamestown Settlement and the Jamestown/Scotland Ferry.
- ±1.05 acre commercial parcel with 177' frontage on Jamestown Road.
- James City County Powhatan Creek Park with public boat landing is located less than quarter of mile.
- Parcel lies between Jamestown Road and Sandy Bay Road adjacent to Jamestown Pie Company.

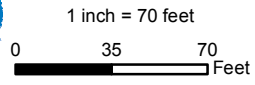
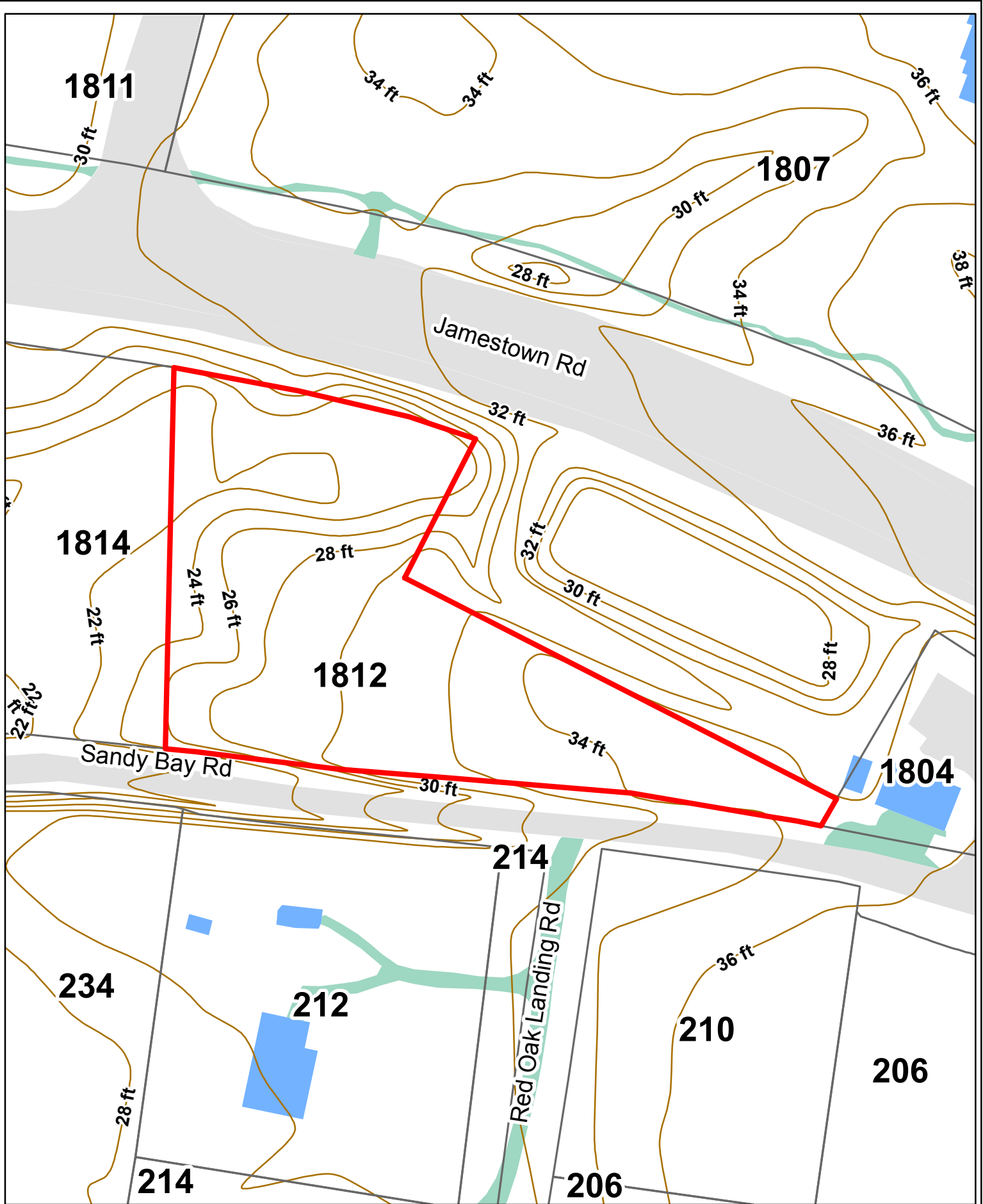
# HIGHLIGHTS

Acres: ±1.05 acres  
 Zoning: LB Limited Business  
 Asking Price: \$135,000



Commercial Real Estate Brokerage  
 423 N. Boundary Street, Suite 200  
 Williamsburg, VA 23185  
 www.rjsassoc.com

Robert J. Singley, Jr. CCIM  
 P / 757.229.3139  
 F / 757.220.2475  
 E / rjsjr@rjsassoc.com



**1812 Jamestown Rd**  
**PIN - 4620100024B**



This drawing is neither a legally recorded map nor a survey and is not intended to be used as such. The information displayed is a compilation of records, information, and data obtained from various sources, and James City County is not responsible for its accuracy or how current it may be.

Copyright James City County GIS Office 9/26/2017  
 C:\GIS\Daily\Daily\_Map\_June\_2016.mxd