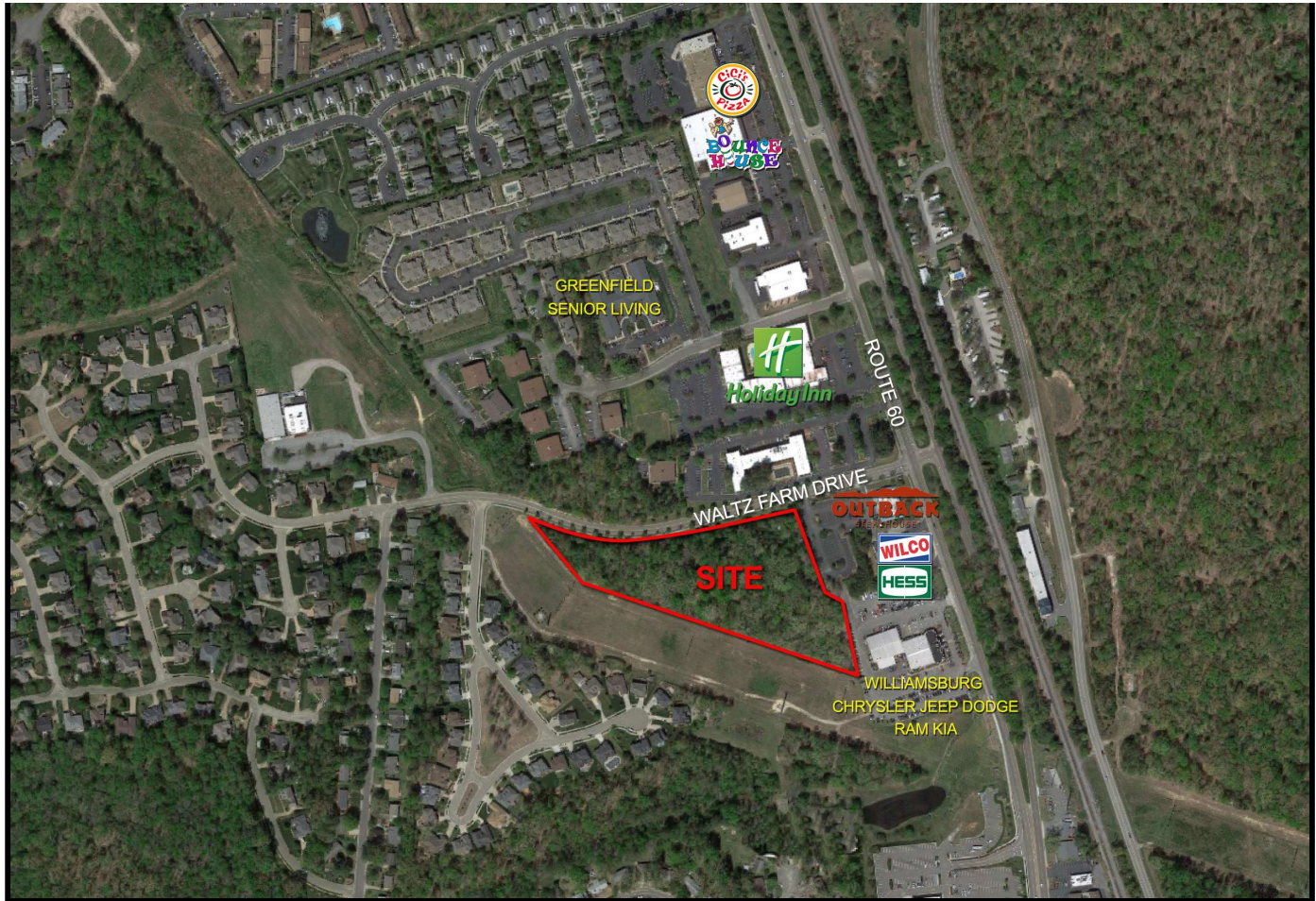


# Commercial Land FOR SALE



## 200 WALTZ FARM DRIVE

Williamsburg, VA

- Excellent Development Opportunity
- Located  $\pm 300$  feet west of the intersection of Waltz Farm Drive and Richmond Road. This intersection has approximately 22,000 vehicles travel along Richmond Road per day.
- Property is centrally located in the heart of the Greater Williamsburg Area.

**SIZE:**

$\pm 6.9$  acres

**PRICE:**

\$650,000

**ZONING:**

B-2

## RJS & Associates. Inc.

Commercial Real Estate  
Brokerage

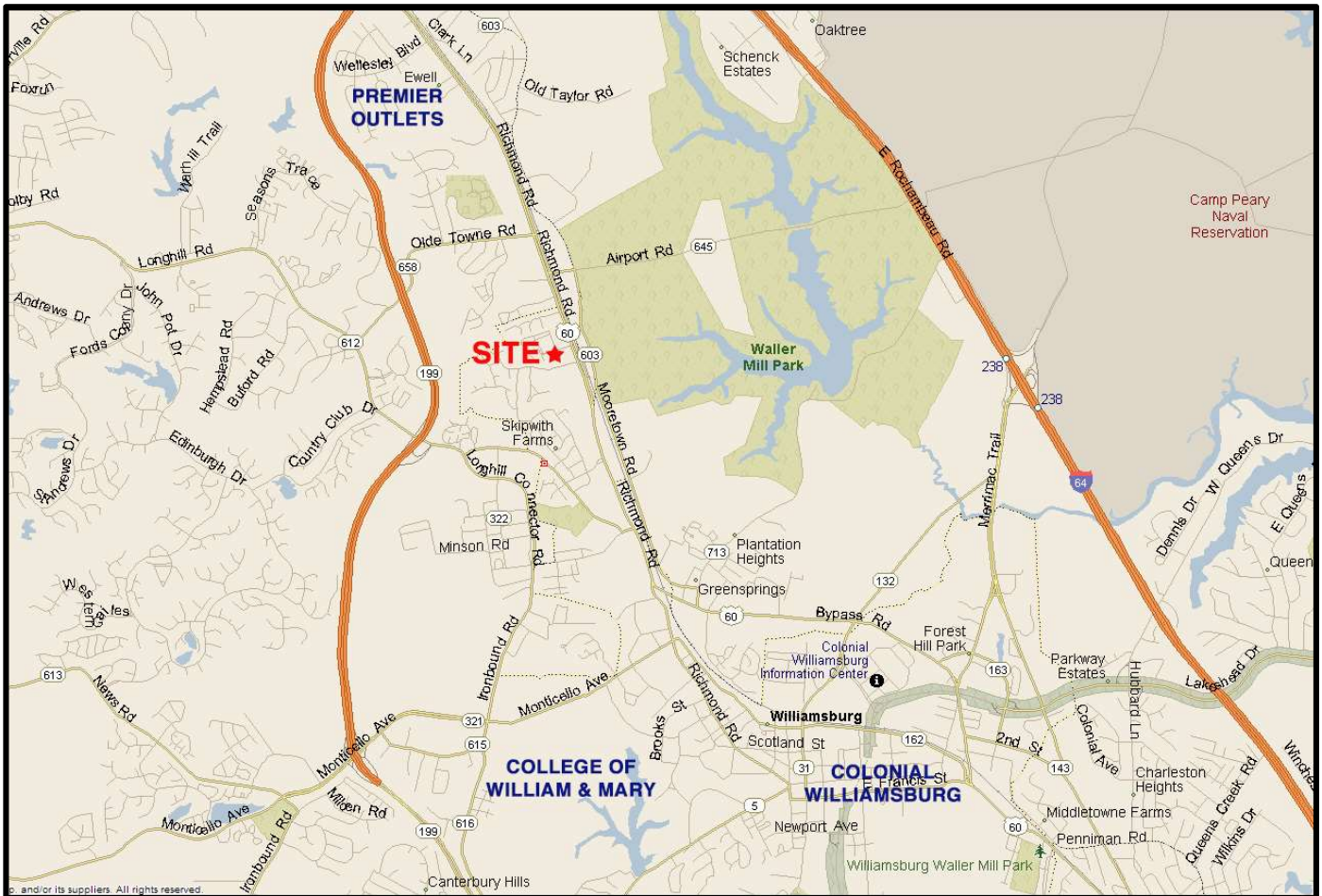
423 N. Boundary Street, Ste 200  
Williamsburg, Virginia 23185-5629

**RJS**  
& ASSOCIATES, INC.

For more Information  
*Contact:*

**Joseph P. Singley**  
**(757) 229-3139**  
Fax (757) 220-2475  
joe@rjsassoc.com

## 200 WALTZ FARM DRIVE • Williamsburg, VA



MAP

- ± 1 mile south of the ±450,000 sqft Williamsburg Premium Outlets, which was ranked No. 8 outlet mall in the industry by the publication Value Retail News.
- ± 1.5 miles north from The College of William & Mary and ± 2 miles from Colonial Williamsburg.

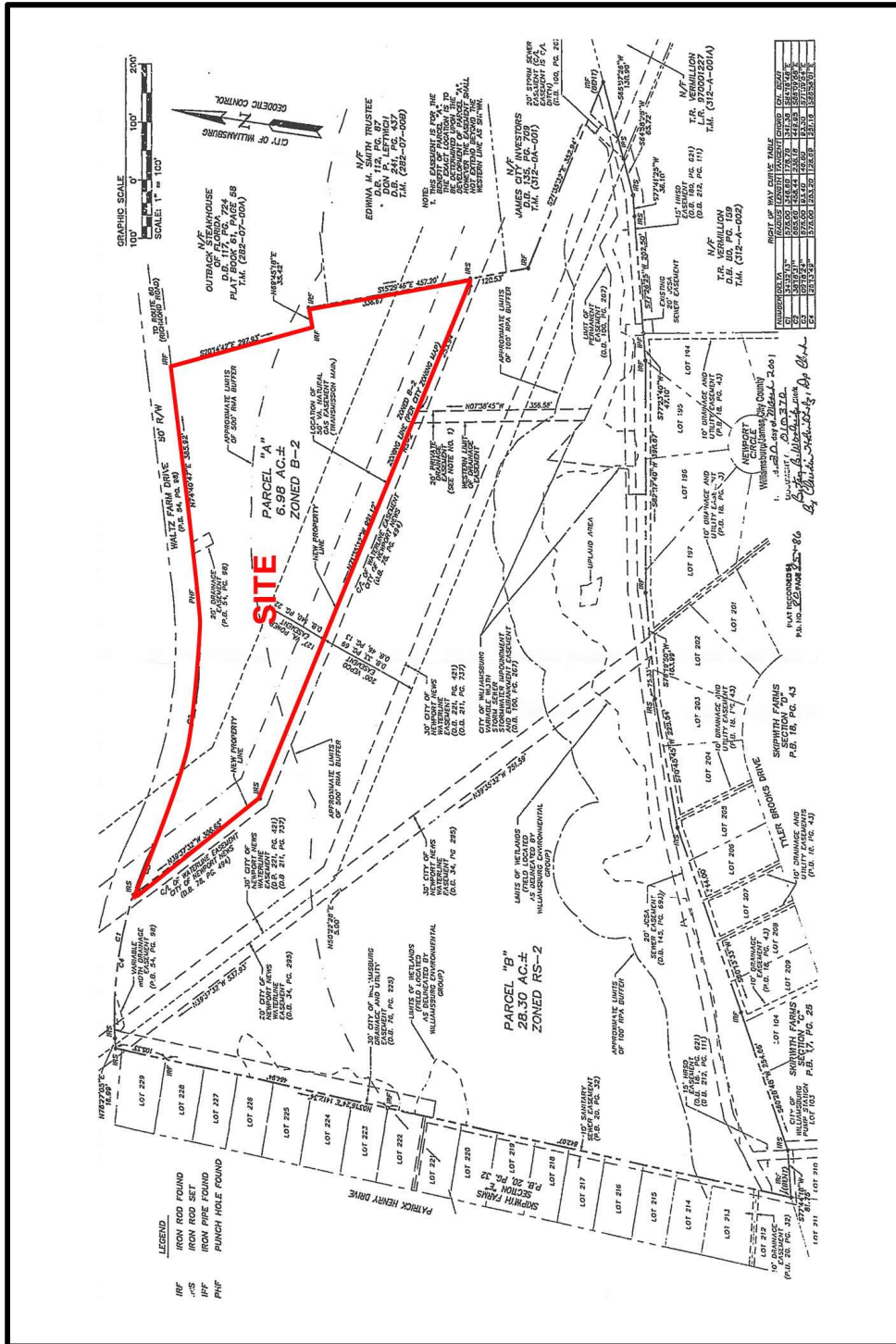
| Demographics                   | 1 Mile   | 3 Mile   | 5 Mile   | 7 Mile   |
|--------------------------------|----------|----------|----------|----------|
| <b>Total Population</b>        | 3,944    | 30,389   | 65,178   | 85,826   |
| <b>Total Households</b>        | 1,648    | 11,160   | 25,464   | 33,552   |
| <b>Median Household Income</b> | \$52,446 | \$59,259 | \$69,722 | \$75,506 |

**RJS & Associates. Inc.**  
 Commercial Real Estate  
 Brokerage  
 423 N. Boundary Street, Ste 200  
 Williamsburg, Virginia 23185-5629



**For more Information  
 Contact:**  
**Joseph P. Singley**  
**(757) 229-3139**  
**Fax (757) 220-2475**  
**joe@rjsassoc.com**

# 200 WALTZ FARM DRIVE • Williamsburg, VA



**SITEPLAN**

**RJS & Associates, Inc.**  
 Commercial Real Estate  
 Brokerage  
 423 N. Boundary Street, Ste 200  
 Williamsburg, Virginia 23185-5629



**For more Information  
 Contact:**  
**Joseph P. Singley**  
**(757) 229-3139**  
**Fax (757) 220-2475**  
[joe@rjsassoc.com](mailto:joe@rjsassoc.com)