

Office Condominium FOR SALE



453-302A McLaws Circle

Busch Corporate Center • Williamsburg, VA 23185

- Excellent professional/medical office opportunity
- Located in the Quarterland Commons section of Busch Corporate Center.
- Busch Corporate Center is a mix of office, limited business, and light industrial uses. It is centrally located at the intersection of U.S. Route 60 and Route 199, approximately one mile from Interstate 64 and fourteen miles east of the Newport News/Williamsburg, Airport.

ASKING PRICE:

\$515,000

CONDIMINIUM SIZE:

± 3,197 SF

YEAR BUILT:

2001

ZONING:

M-1

(Limited Business/Industrial)

RJS & Associates. Inc.

Commercial Real Estate
Brokerage

423 N. Boundary Street, Ste 200

Williamsburg, Virginia 23185-5629

RJS
& ASSOCIATES, INC.

For more Information
Contact:

Joseph P. Singley

(757) 229-3139

joe@rjsassoc.com

453-302A McLaws Circle

Busch Corporate Center • Williamsburg, VA 23185



RJS & Associates. Inc.

Commercial Real Estate
Brokerage

423 N. Boundary Street, Ste 200
Williamsburg, Virginia 23185-5629



For more Information

Contact:

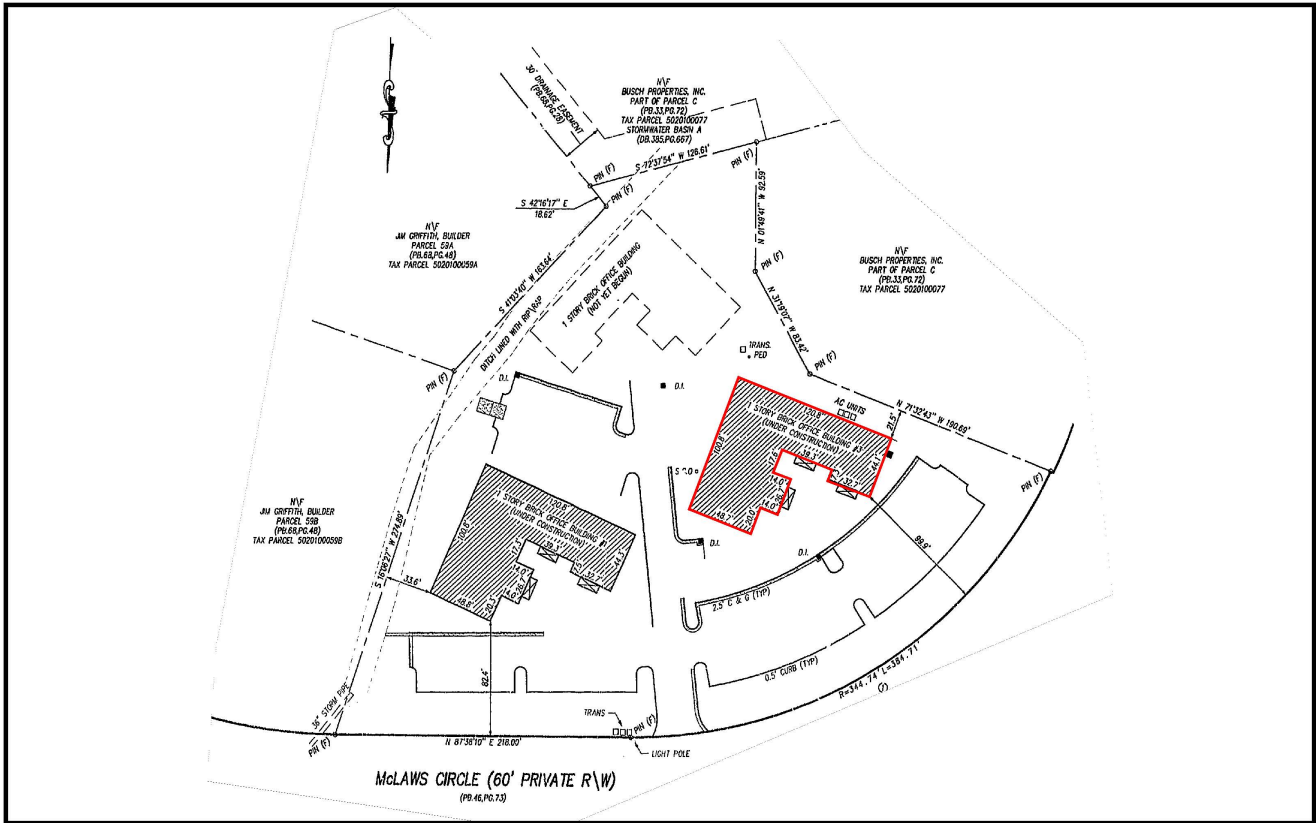
Joseph P. Singley

(757) 229-3139

joe@rjsassoc.com

453-302A McLaws Circle

Busch Corporate Center • Williamsburg, VA 23185



SITE PLAN

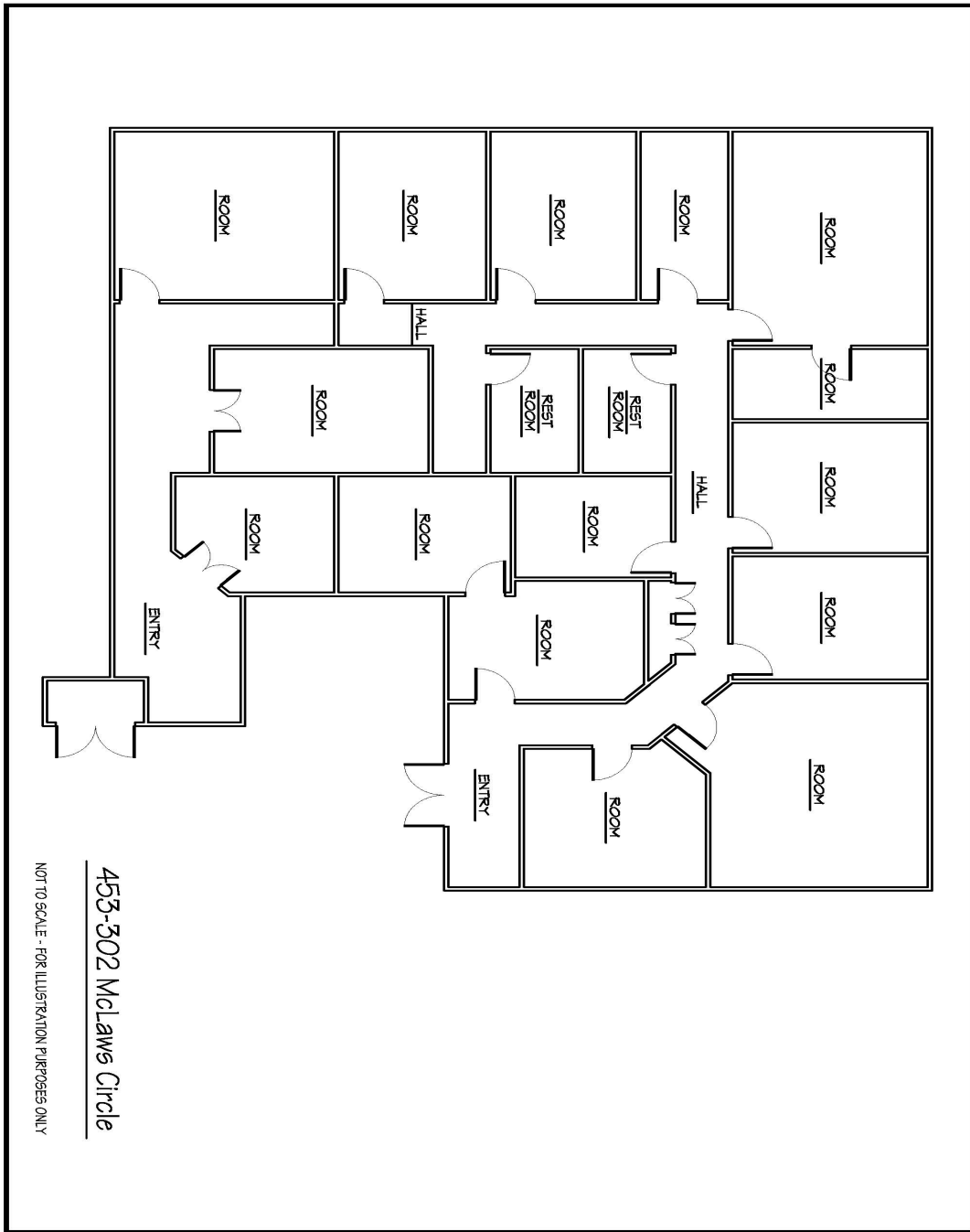
RJS & Associates. Inc.
Commercial Real Estate
Brokerage
423 N. Boundary Street, Ste 200
Williamsburg, Virginia 23185-5629



For more Information
Contact:
Joseph P. Singley
(757) 229-3139
joe@rjsassoc.com

453-302A McLaws Circle

Busch Corporate Center • Williamsburg, VA 23185



RJS & Associates. Inc.

Commercial Real Estate
Brokerage

423 N. Boundary Street, Ste 200
Williamsburg, Virginia 23185-5629



For more Information
Contact:

Joseph P. Singley

(757) 229-3139

joe@rjsassoc.com