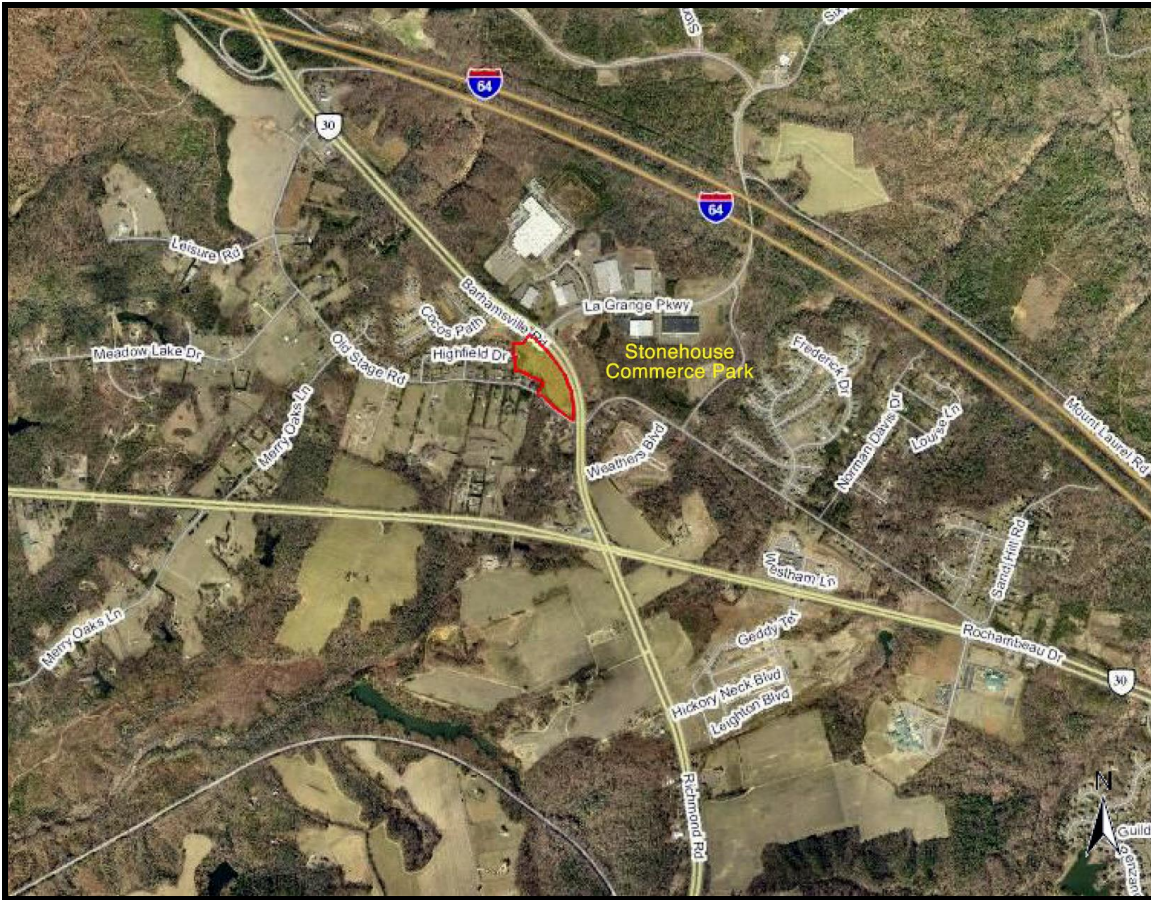


Mixed Use Land

FOR SALE



8909 BARHAMSVILLE ROAD

Williamsburg, VA 23168

- This ± 9.9 acre tract of land is situated in the upper part of James City County. The James City County 2009 Comprehensive Plan designates this parcel as Mixed Use
- The Mixed Use zoning promotes a multiuse master-planned community which may include residential, commercial, industrial, office, and other nonresidential uses
- Adjacent to the property is the +229 Acre Stonehouse Commerce Park which is home to the following businesses: Lumber Liquidators, Design Masters Associates, Nicewood Enterprises, Avid Medical, Wythe Will Distributing, Inc., C&F Financial Corporation Operation Center, ESG International, Inc, and La Tienda.

SALES PRICE:

\$650,000

ACREAGE:

±9.89

ZONING:

A-1 (General Agriculture)

FRONTAGE:

US Route 30: ± 1,125 ft.

Old Stage Rd: ± 500 ft.

RJS & Associates. Inc.

Commercial Real Estate
Brokerage

423 N. Boundary Street, Ste 200

Williamsburg, Virginia 23185-5629

RJS
& ASSOCIATES, INC.

For more Information
Contact:

Joseph P. Singley

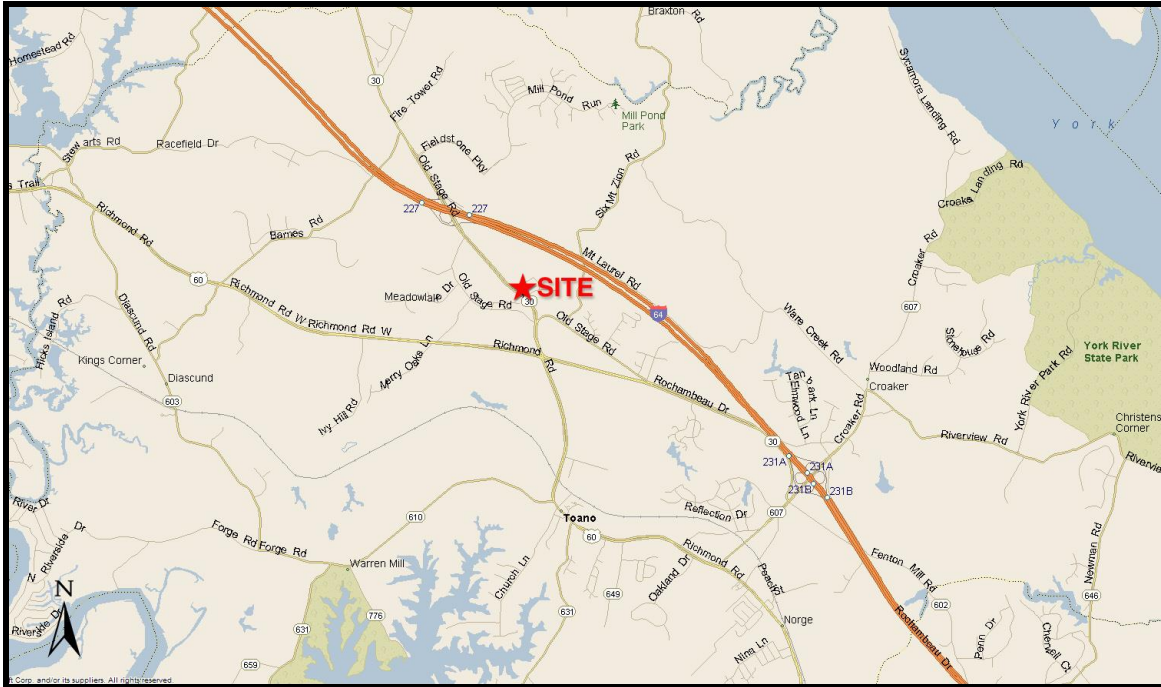
(757) 229-3139

Fax (757) 220-2475

joe@rjsassoc.com

8909 BARHAMSVILLE ROAD

Williamsburg, VA 23168



MAP

- ± 1 Mile from Interstate 64, Exit 227
- 2018 Demographics

	3 Miles	5 Miles	7 Miles
Total Population:	9,986	18,138	31,367
Total Households:	3,586	6,924	11,820
Median Household Income:	\$81,559	\$78,233	\$76,665

RJS & Associates. Inc.

Commercial Real Estate
Brokerage

423 N. Boundary Street, Ste
200

Williamsburg, Virginia 23185-5629



For more Information
Contact:

Robert J. Singley, Jr. CCIM

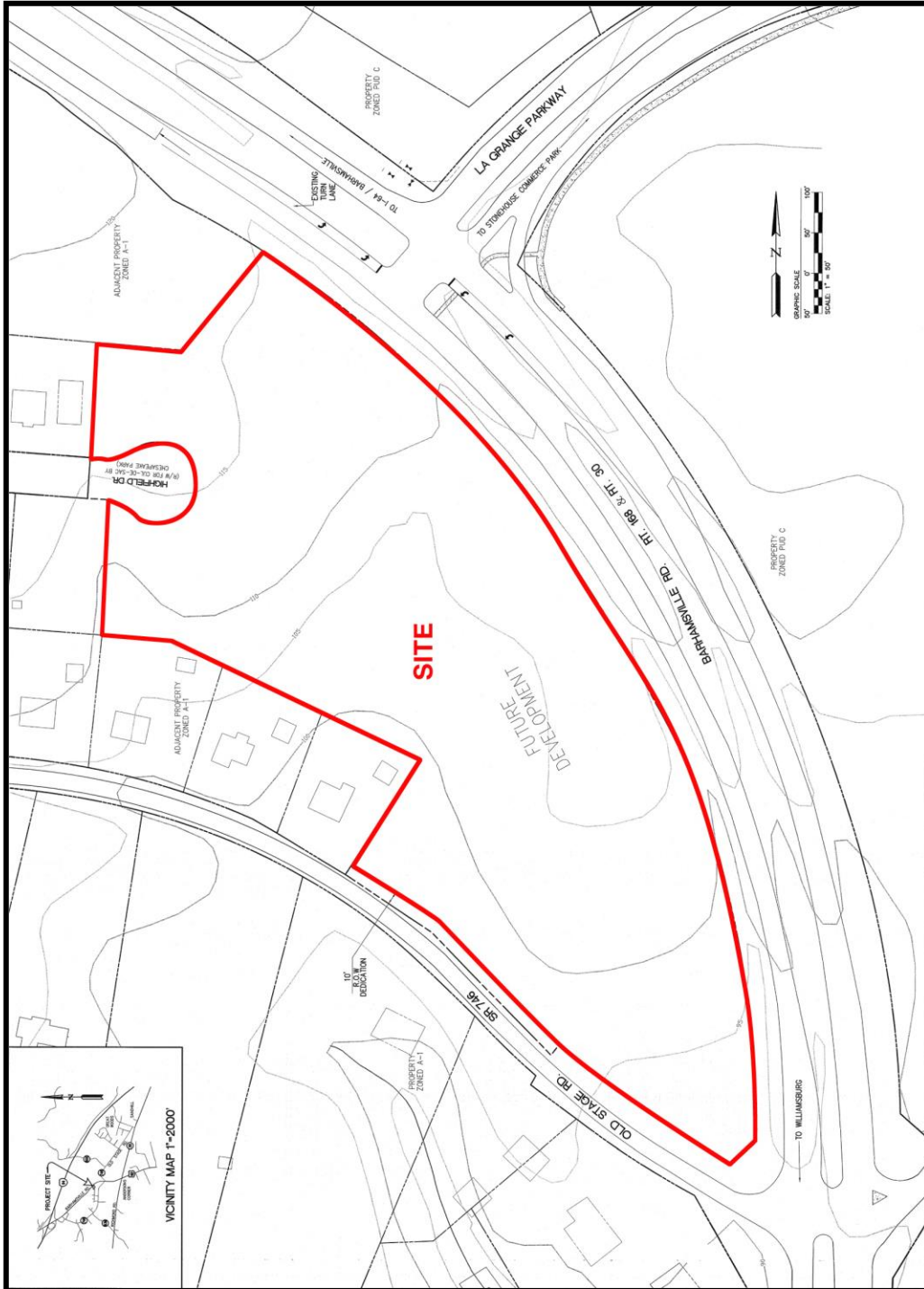
(757) 229-3139

Fax (757) 220-2475

rjsjr@rjsassocs.com

8909 BARHAMSVILLE ROAD

Williamsburg, VA 23168



RJS & Associates. Inc.

Commercial Real Estate
Brokerage

423 N. Boundary Street, Ste
200

Williamsburg, Virginia 23185-5629

RJS
& ASSOCIATES, INC.

For more Information
Contact:

Robert J. Singley, Jr. *CCIM*

(757) 229-3139

Fax (757) 220-2475

rjsjr@rjsassocs.com

8909 BARHAMSVILLE ROAD

Williamsburg, VA 23168



AERIAL

RJS & Associates. Inc.

Commercial Real Estate
Brokerage

423 N. Boundary Street, Ste
200

Williamsburg, Virginia 23185-5629



For more Information
Contact:

Robert J. Singley, Jr. *CCIM*

(757) 229-3139

Fax (757) 220-2475

rjsjr@rjsassoc.com