

Commercial Land

FOR SALE



25 STRATFORD ROAD

35 STRATFORD ROAD

Williamsburg, VA

- Excellent Development Opportunity.
- Located ± 550 feet west of the intersection of Stratford Road and Richmond Road.
- All utilities are available to site.
- Property is centrally located in the heart of the Greater Williamsburg Area.

ASKING PRICE:

\$475,000

TOTAL SIZE:

± 2.8 Acres

ZONING:

B-1 (General Business)

FRONTAGE:

± 453 ft along Stratford Road

RJS & Associates, Inc.

Commercial Real Estate
Brokerage

423 N. Boundary Street, Ste 200
Williamsburg, Virginia 23185-5629

RJS
& ASSOCIATES, INC.

For more Information
Contact:

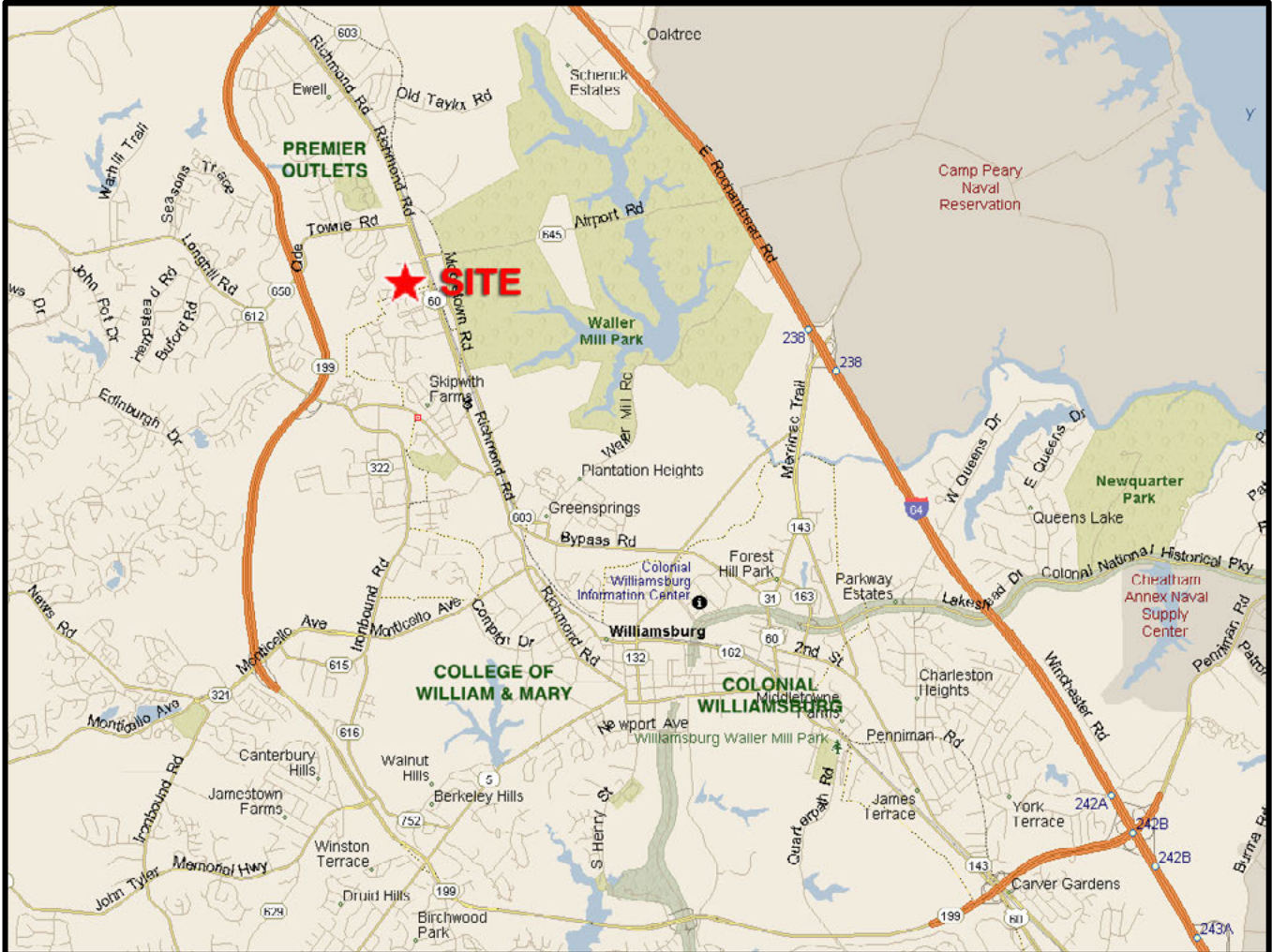
Joseph P. Singley

(757) 229-3139

Fax (757) 220-2475

joe@rjsassoc.com

25 STRATFORD ROAD • 35 STRATFORD ROAD • Williamsburg, VA



MAP

- ± 0.5 mile south of the $\pm 450,000$ sqft Premier Outlets, which was ranked No. 8 outlet mall in the industry by the publication Value Retail News.
- ± 2 miles north from The College of William & Mary and ± 2.5 Miles from Colonial Williamsburg.

RJS & Associates. Inc.

Commercial Real Estate
Brokerage

423 N. Boundary Street, Ste 200
Williamsburg, Virginia 23185-5629



For more Information

Contact:

Joseph P. Singley

(757) 229-3139

Fax (757) 220-2475

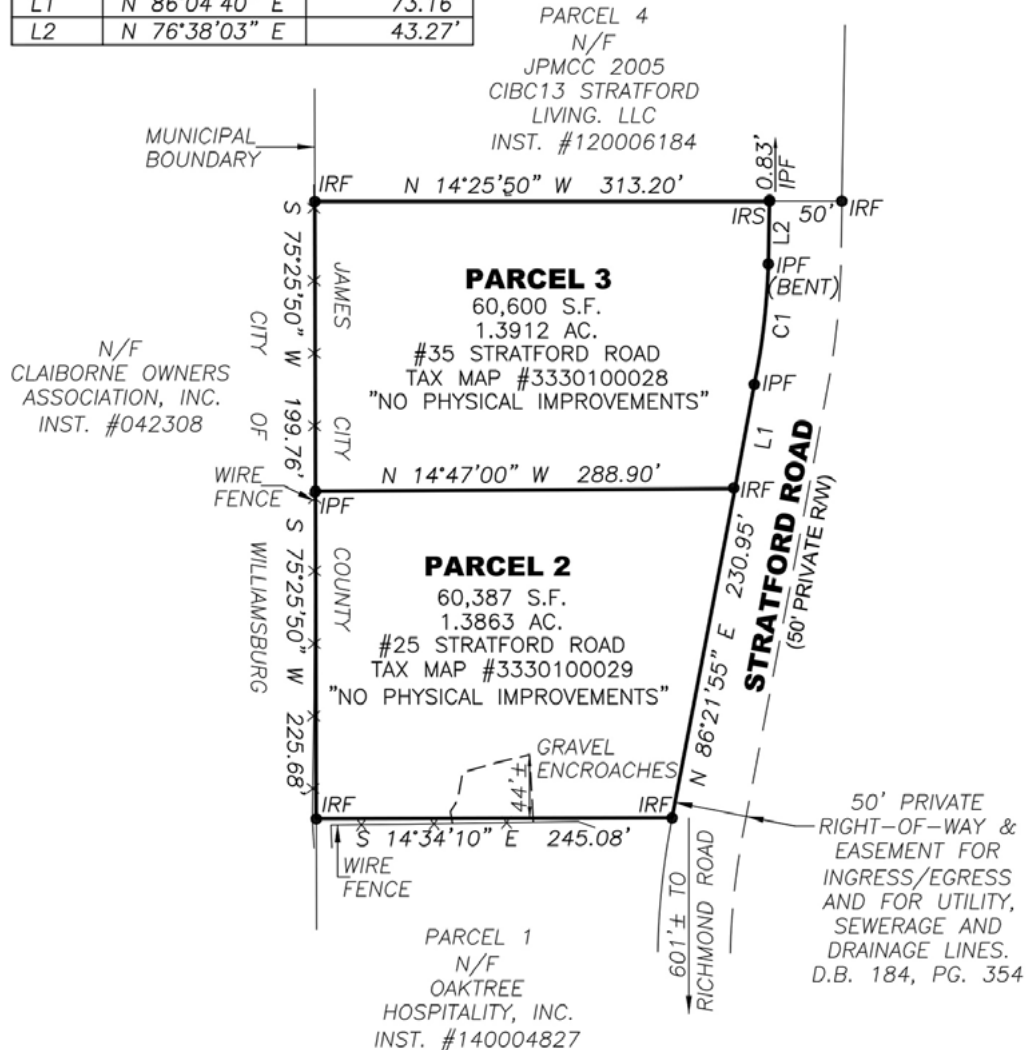
joe@rjsassoc.com

25 STRATFORD ROAD • 35 STRATFORD ROAD • Williamsburg, VA

RECORD
MERIDIAN
P.B. 44, PG. 39

CURVE	RADIUS	ARC	CHORD	CHORD BEARING	DELTA
C1	477.92'	83.44'	83.34'	N 82°14'13" E	10°00'13"

LINE	BEARING	DISTANCE
L1	N 86°04'40" E	73.16'
L2	N 76°38'03" E	43.27'



LEGEND

- IRF = IRON ROD FOUND
- IRS = IRON ROD SET
- IPF = IRON PIPE FOUND

SURVEY

RJS & Associates. Inc.
Commercial Real Estate
Brokerage
423 N. Boundary Street, Ste 200
Williamsburg, Virginia 23185-5629



**For more Information
Contact:**
Joseph P. Singley
(757) 229-3139
Fax (757) 220-2475
joe@rjsassoc.com