

Commercial Land For Sale

912 Capitol Landing Road
Williamsburg, Virginia



Property Features

- Excellent commercial development opportunity located in the City of Williamsburg with direct access to Interstate 64.
- Highly visible parcel with ± 366 feet of frontage along Capitol Landing Road.
- Property is located within the City of Williamsburg's Culinary Arts and Hospitality District
- All utilities are available to the property.

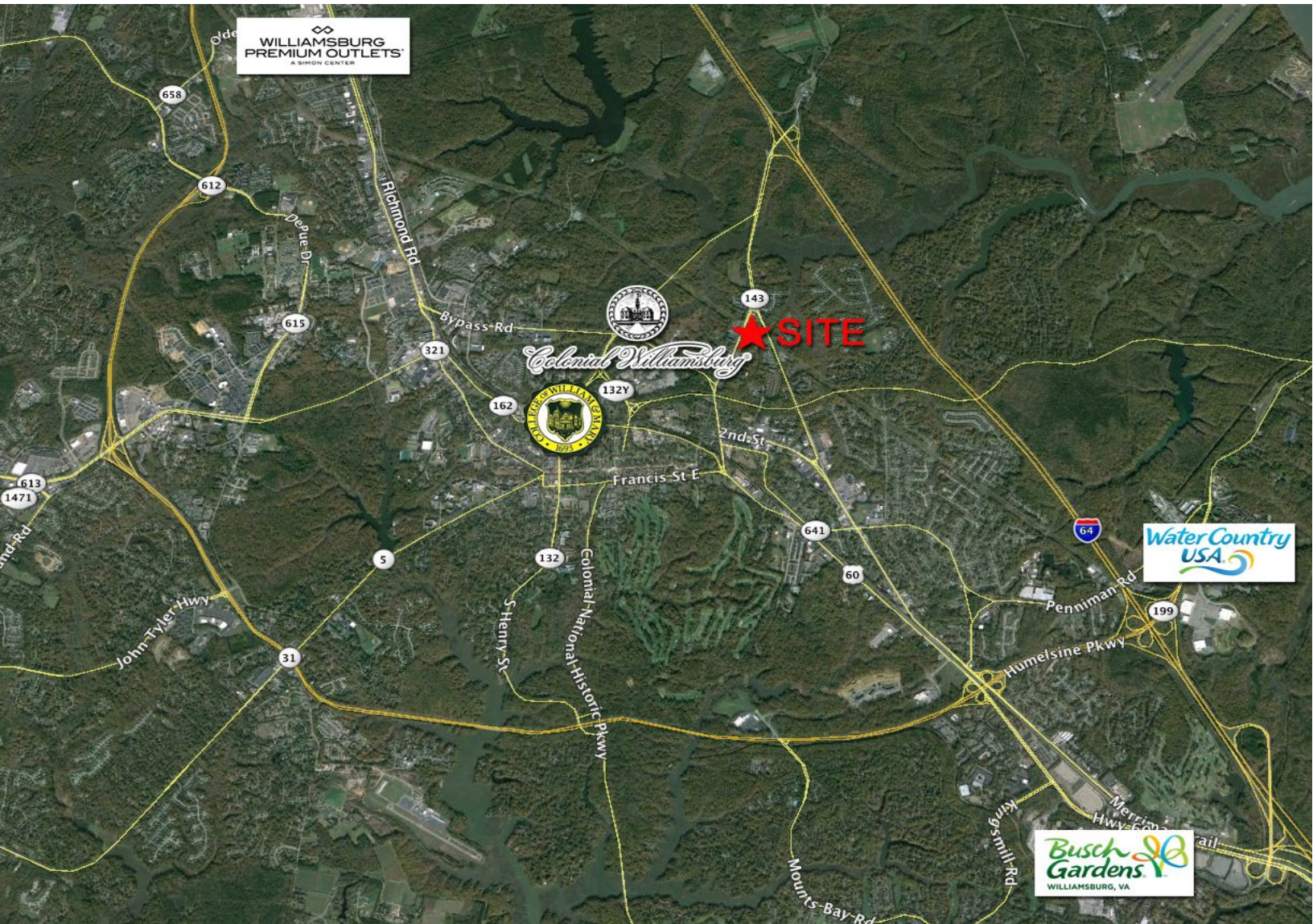
Highlights

Price	\$650,000
Size	± 2.7 Acres
Zoning	B-4
Traffic Count	$\pm 6,800$ vehicles per day

Robert J. Singley, Jr. CCIM
(757) 229-3139
Fax (757) 220-2475
rjsjr@rjsassocs.com

RJS
& ASSOCIATES, INC.

Commercial Real Estate Brokerage
423 N. Boundary Street, Suite 200
Williamsburg, VA 23185
www.rjsassocs.com



Map

- Located ±1 mile South of Interstate 64, ±1/4 mile East of Colonial Williamsburg Information Center, and ±2 miles east of the College of William & Mary.
- Parcel is less than a mile from the Bypass Road Corridor which contains over 1,500 hotel rooms.
- Over 5 million tourists visit the Williamsburg area attractions (Jamestown, Yorktown, Busch Gardens, Water Country USA, and the Great Wolf Lodge) annually.

Demographics	1 Mile	3 Mile	5 Mile
Total Population	4,381	25,480	56,885
Total Households	1,760	8,971	22,221
Median Household Income	\$46,093	\$57,703	\$70,520

Robert J. Singley, Jr. CCIM

(757) 229-3139

Fax (757) 220-2475

rjsjr@rjsassocs.com

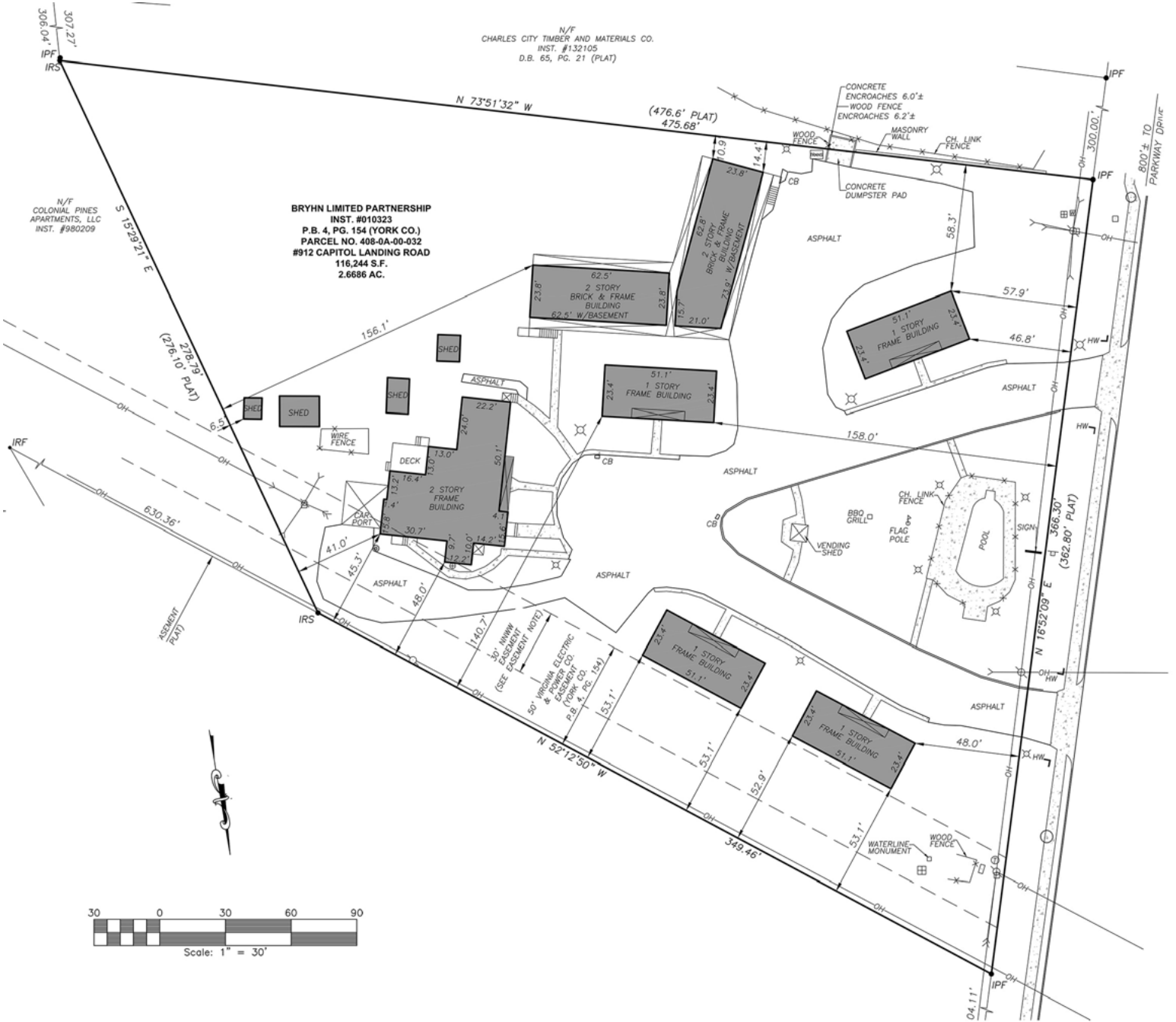


Commercial Real Estate Brokerage

423 N. Boundary Street, Suite 200

Williamsburg, VA 23185

www.rjsassocs.com



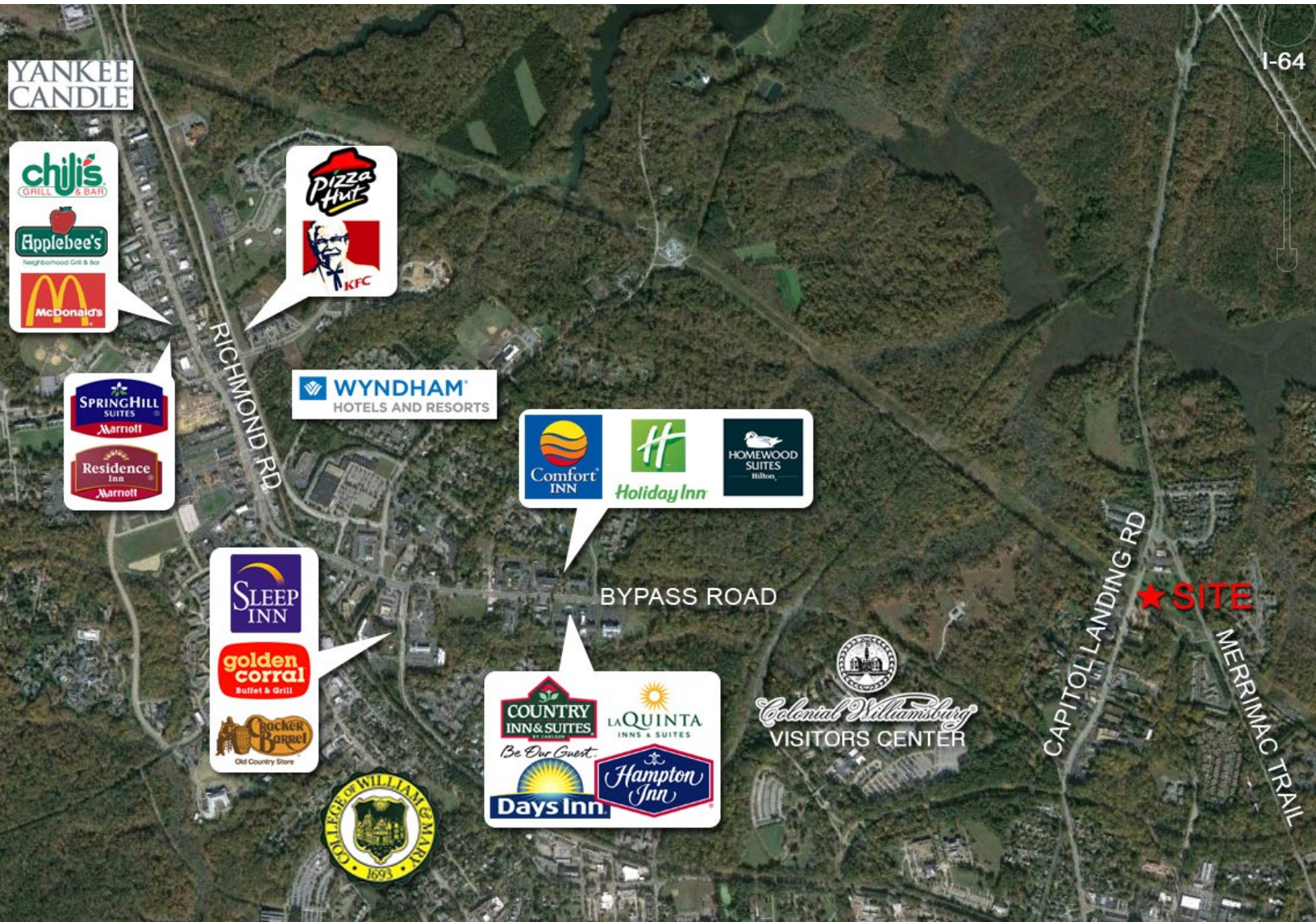
Survey

Note: All structures have been demolished and removed.

Robert J. Singley, Jr. CCIM
(757) 229-3139
Fax (757) 220-2475
rjsjr@rjsassocs.com



Commercial Real Estate Brokerage
423 N. Boundary Street, Suite 200
Williamsburg, VA 23185
www.rjsassocs.com



Aerial

Robert J. Singley, Jr. CCIM
(757) 229-3139
Fax (757) 220-2475
rjsjr@rjsassoc.com



Commercial Real Estate Brokerage
423 N. Boundary Street, Suite 200
Williamsburg, VA 23185
www.rjsassoc.com



ELEVATION STUDY



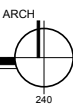
PERSPECTIVE STUDY



**CONCEPT SKETCH for
CAPITOL LANDING ROAD DEVELOPMENT**

CITY OF WILLIAMSBURG, VIRGINIA

ARCH
36067



28 MAR 2017

HOPKE & ASSOCIATES
ARCHITECTURE, PLANNING, INTERIORS
1156 JAMESTOWN ROAD, SUITE C
WILLIAMSBURG, VIRGINIA 23185
757.229-1100
www.hopke.com