

OFFICE FOR LEASE

5209 Center Street Williamsburg, VA



Property Features

- The WEG Building is a three-story, ±19,200 square foot office building located at the corner of New Town Avenue and Center Street in the heart of the New Town “town center”.
- Centrally located in the Williamsburg Market.
- College of William & Mary, Colonial Williamsburg, and Williamsburg/James City County Courthouse within 1 mile.
- Easy access to I-64 via Route 199.

Property Highlights

Rental Rate:	CALL FOR RENTAL RATE
Availability:	
First Floor:	± 2,700 SF
Third Floor:	± 7,150 SF (CAN BE SUBDIVIDED)
Lease Type:	Net of Utilities / Janitorial

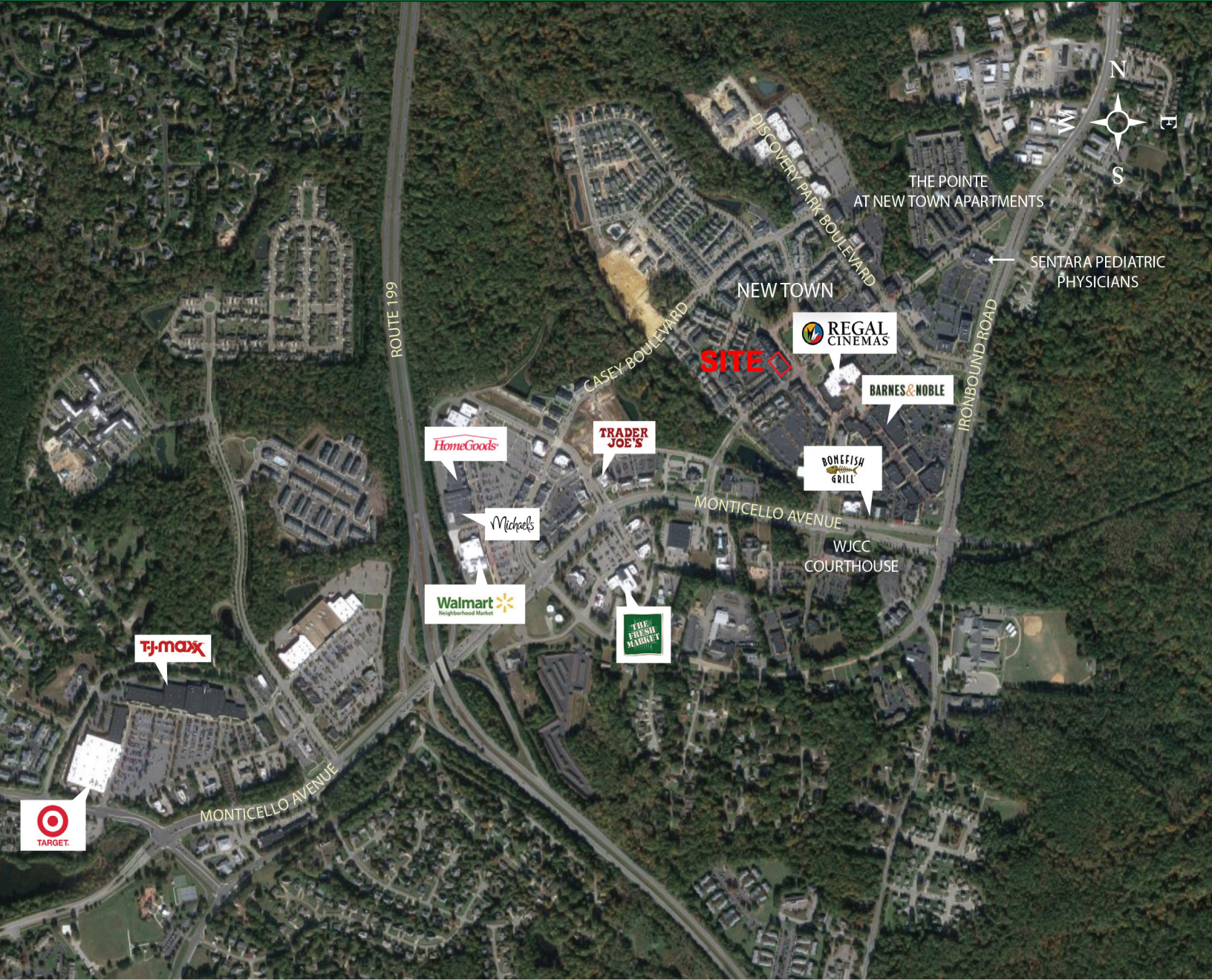


Commercial Real Estate Brokerage
423 N. Boundary Street, Suite 200
Williamsburg, VA 23185
www.rjsassoc.com

Robert J. Singley, Jr., CCIM
P / 757.229.3139
E / rjsjr@rjsassoc.com

OFFICE FOR LEASE

5209 Center Street Williamsburg, VA



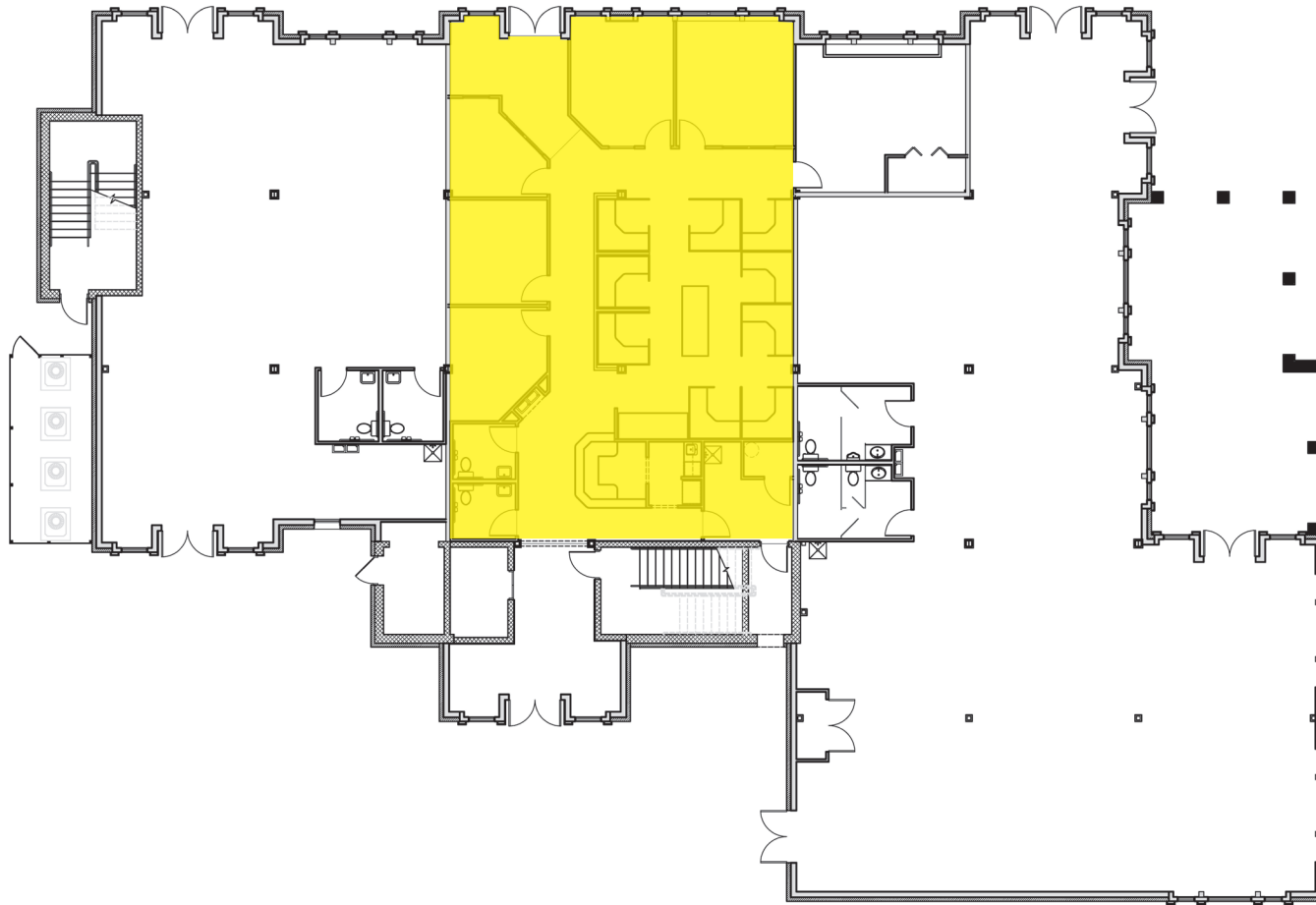
Commercial Real Estate Brokerage
423 N. Boundary Street, Suite 200
Williamsburg, VA 23185
www.rjsassocs.com

Robert J. Singley, Jr., CCIM
P / 757.229.3139
E / rjsjr@rjsassocs.com

**OFFICE
FOR LEASE**
5209 Center Street Williamsburg, VA

First Floor Plan

± 2,700 SF



Commercial Real Estate Brokerage
423 N. Boundary Street, Suite 200
Williamsburg, VA 23185
www.rjsassoc.com

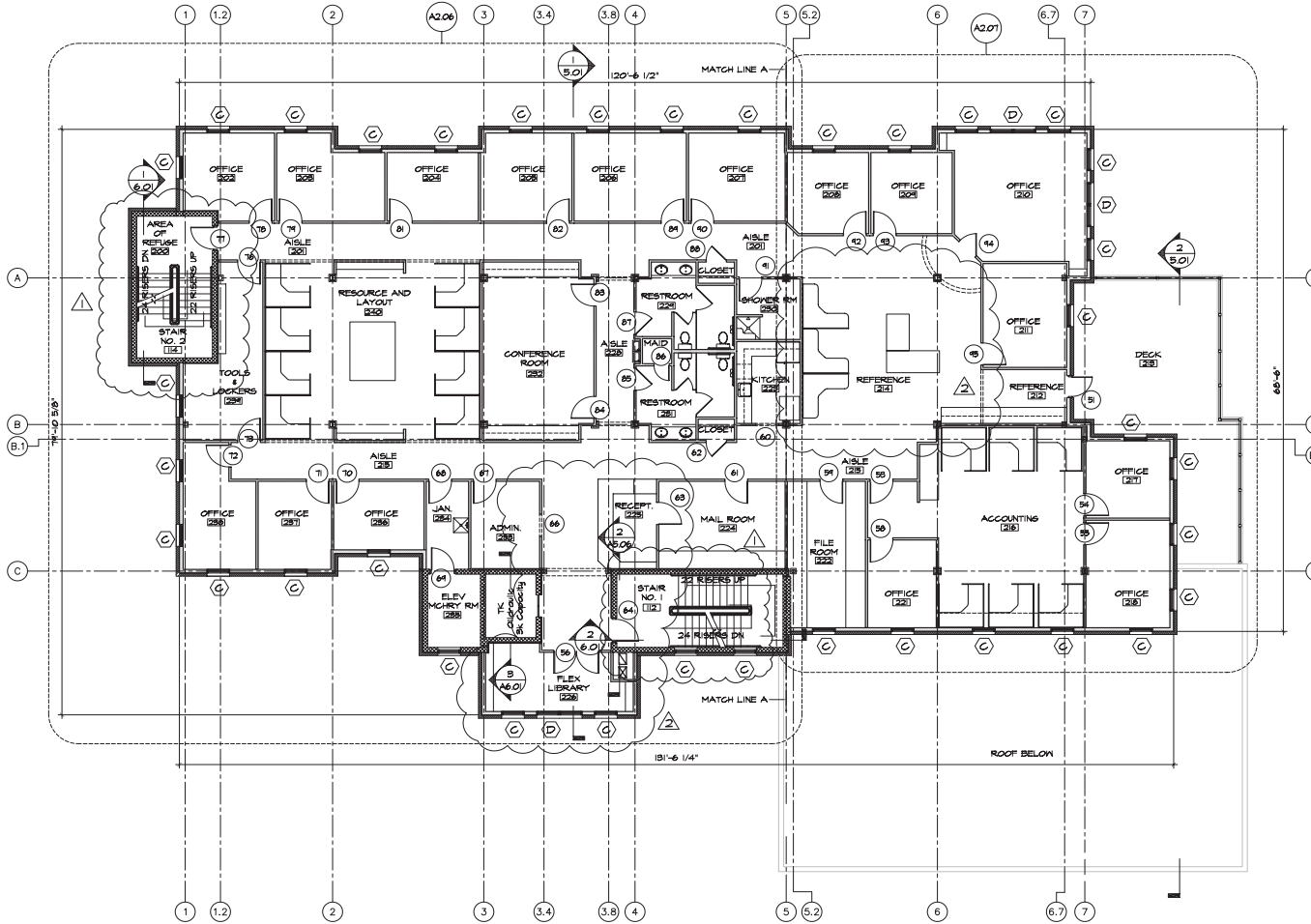
Robert J. Singley, Jr., CCIM
P / 757.229.3139
E / rjsjr@rjsassoc.com

OFFICE FOR LEASE

5209 Center Street Williamsburg, VA

Third Floor Plan (CAN BE SUBDIVIDED)

± 7,150 SF



Commercial Real Estate Brokerage
423 N. Boundary Street, Suite 200
Williamsburg, VA 23185
www.rjsassocs.com

Robert J. Singley, Jr., CCIM
P / 757.229.3139
E / rjsjr@rjsassocs.com