

Office Space

FOR SALE



479 MCLAWS CIRCLE

Busch Corporate Center • Williamsburg, VA 23185

- Excellent professional/medical office opportunity
- Located in the Quarterland Commons section of Busch Corporate Center.
- Busch Corporate Center is a mix of office, limited business, and light industrial uses. It is centrally located at the intersection of U.S. Route 60 and Route 199, approximately one mile from Interstate 64 and fourteen miles east of the Newport News/Williamsburg, Airport.

PRICE:

\$385,000

BUILDING SIZE:

± 3,070 SF

1st Floor

± 2,424 SF

2nd Floor

± 645 SF

YEAR BUILT:

1986

ZONING:

M-1

(Limited Business/Industrial)

RJS & Associates. Inc.

Commercial Real Estate
Brokerage

423 N. Boundary Street, Ste 200
Williamsburg, Virginia 23185-5629

RJS
& ASSOCIATES, INC.

For more Information
Contact:

Joseph P. Singley

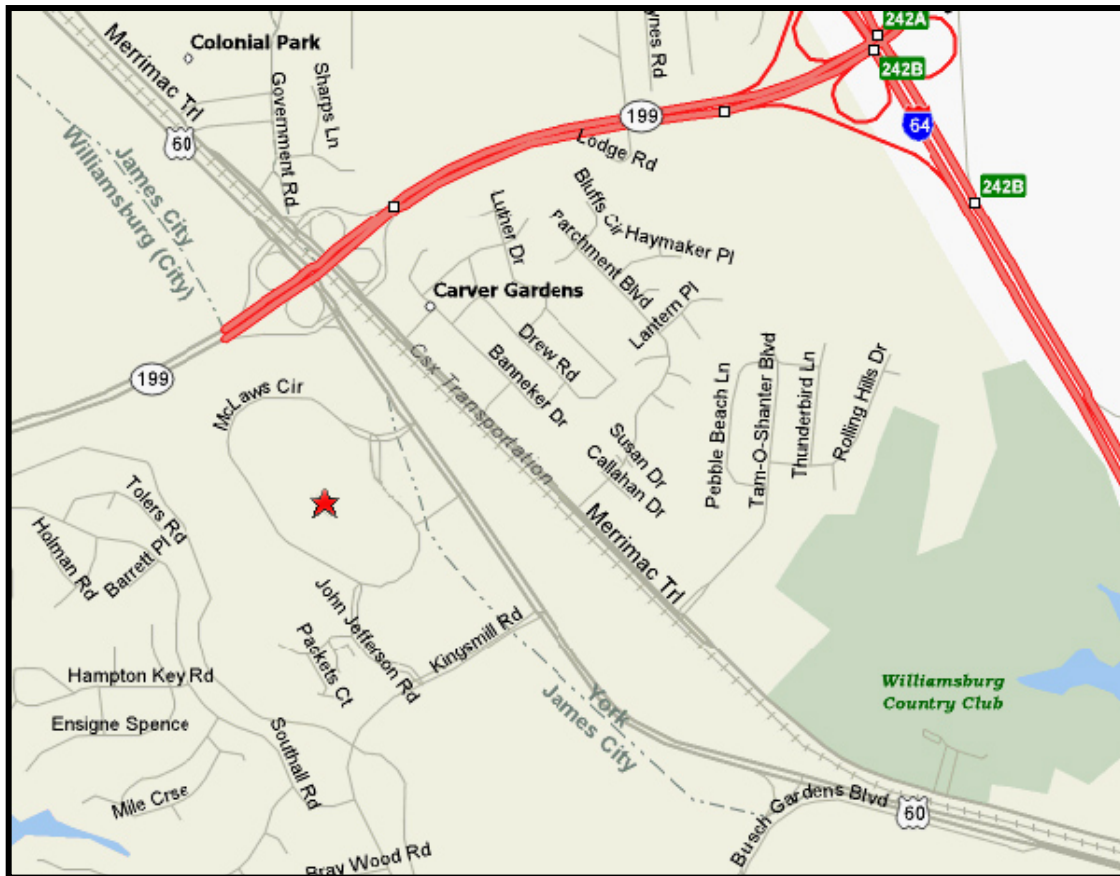
(757) 229-3139

Fax (757) 220-2475

joe@rjsassoc.com

479 MCLAWS CIRCLE

Busch Corporate Center • Williamsburg, VA 23185



MAP

RJS & Associates. Inc.

Commercial Real Estate
Brokerage

423 N. Boundary Street, Ste 200
Williamsburg, Virginia 23185-5629



For more Information
Contact:

Joseph P. Singley

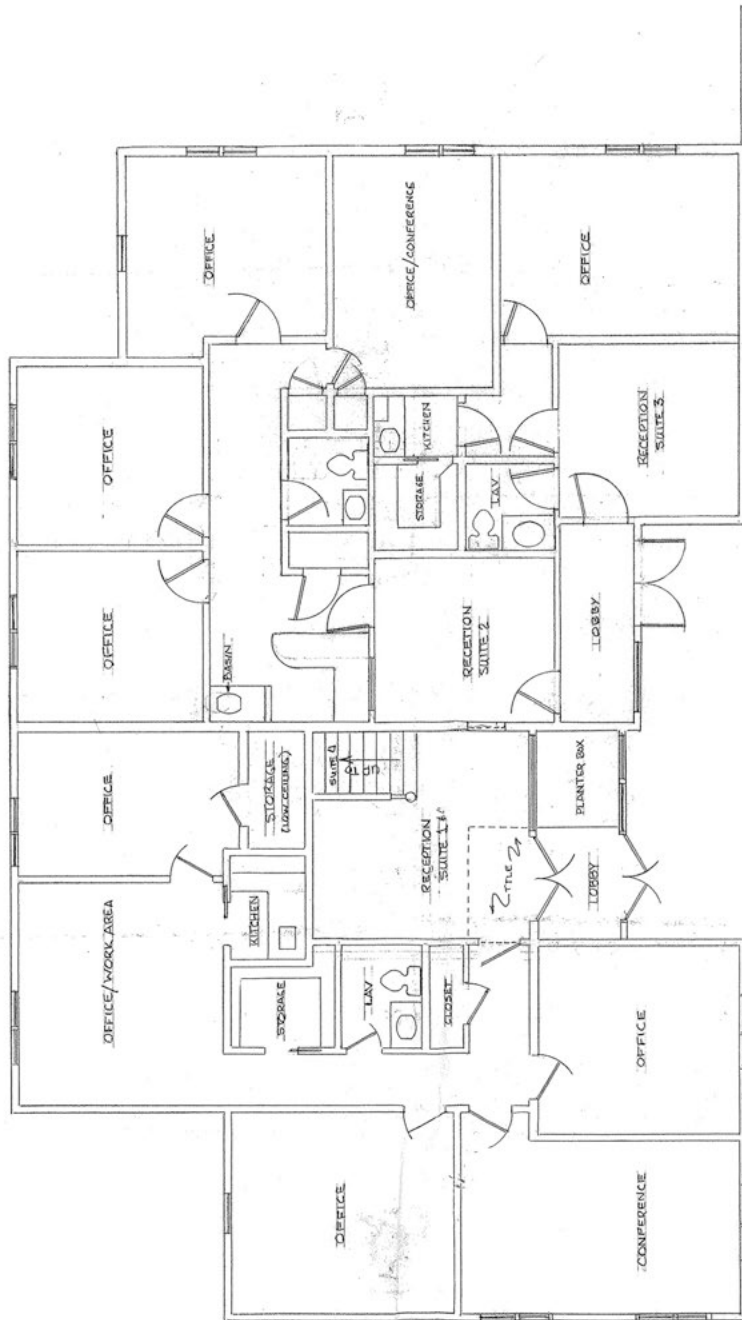
(757) 229-3139

Fax (757) 220-2475

joe@rjsassoc.com

479 MCLAWS CIRCLE

Busch Corporate Center • Williamsburg, VA 23185



FIRST FLOOR PLAN

RJS & Associates. Inc.
Commercial Real Estate
Brokerage

423 N. Boundary Street, Ste 200
Williamsburg, Virginia 23185-5629

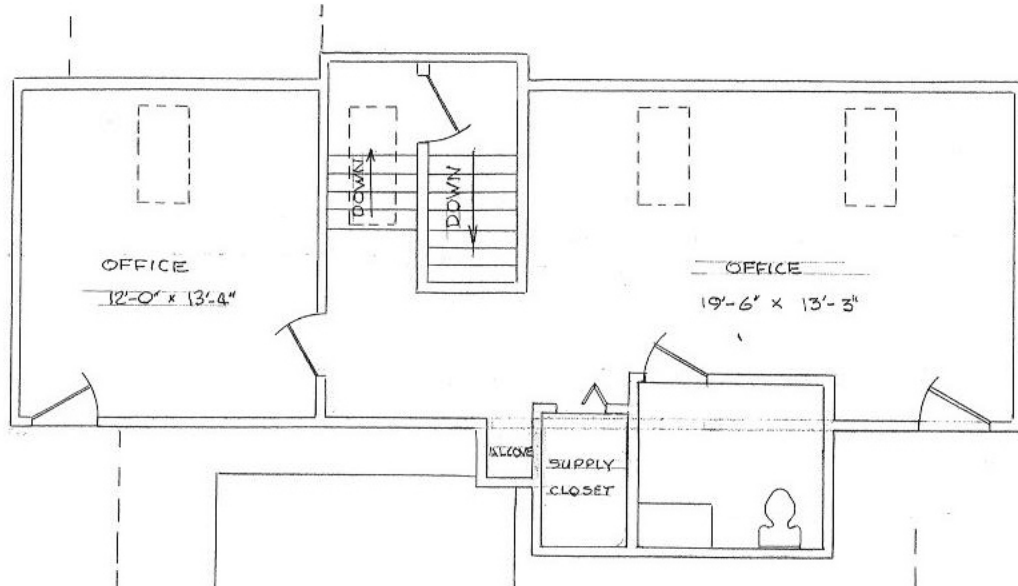


For more Information
Contact:

Joseph P. Singley
(757) 229-3139
Fax (757) 220-2475
joe@rjsassoc.com

479 MCLAWS CIRCLE

Busch Corporate Center • Williamsburg, VA 23185



SECOND FLOOR PLAN

RJS & Associates. Inc.

Commercial Real Estate
Brokerage

423 N. Boundary Street, Ste 200
Williamsburg, Virginia 23185-5629

RJS
& ASSOCIATES, INC.

For more Information
Contact:

Joseph P. Singley

(757) 229-3139

Fax (757) 220-2475

joe@rjsassoc.com