

Commercial Land FOR SALE



919 CAPITOL LANDING ROAD

Williamsburg, VA

- Excellent professional/medical office development opportunity
- Located behind the Alexander Commons Office Park.
- Alexander Commons Office Park is located \pm 1 mile South of Interstate 64, \pm .25 mile East of Colonial Williamsburg Information Center, and \pm 2 miles East of the College of William & Mary.
- The property was planned to be the Phase II section of Alexander Commons Office Park
- All utilities are available to the site.

PRICE:

\$239,500

LAND SIZE:

\pm 5.9 Acres

ZONING:

LB-4
(Limited Business)

RJS & Associates. Inc.

Commercial Real Estate
Brokerage

423 N. Boundary Street, Ste 200
Williamsburg, Virginia 23185-5629

RJS
& ASSOCIATES, INC.

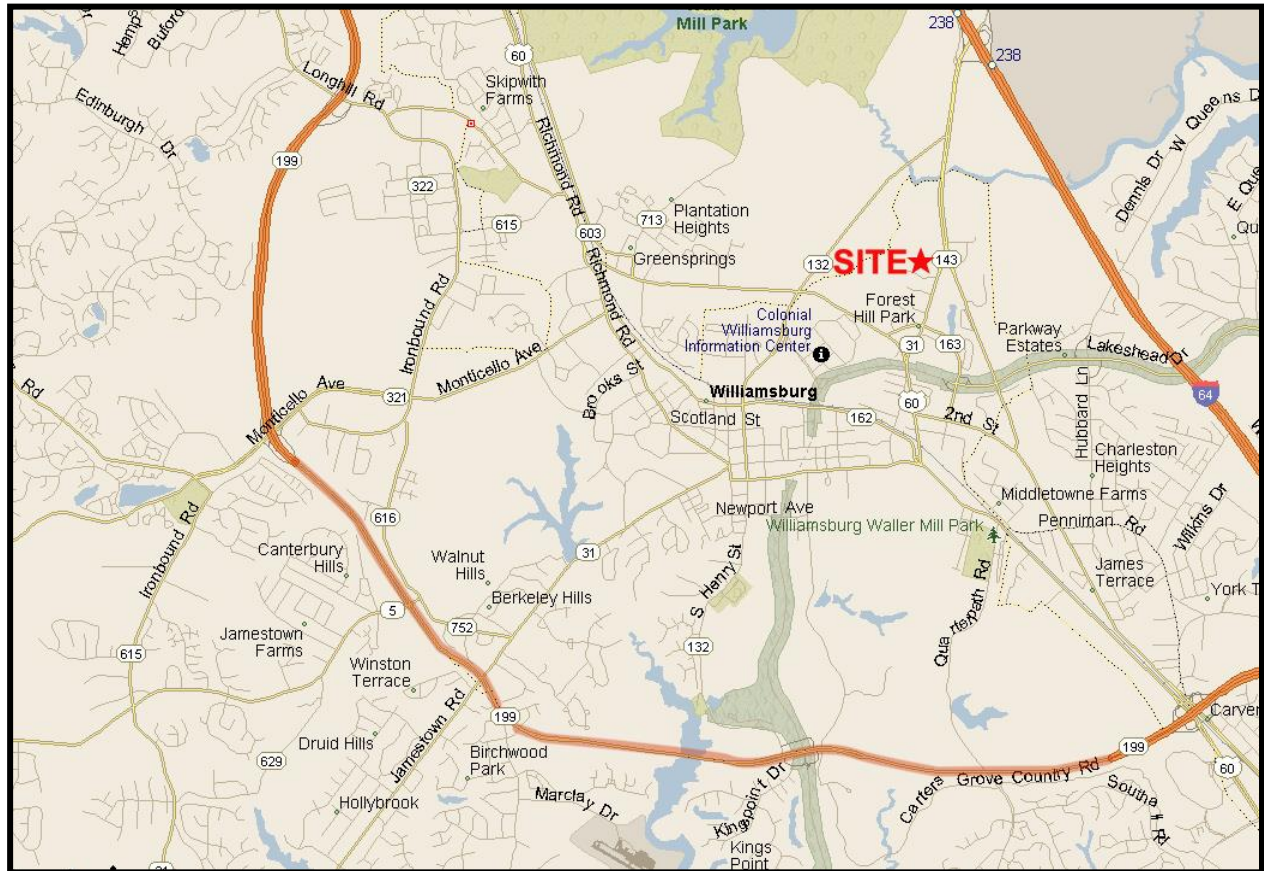
For more Information

Contact:

Joseph P. Singley
(757) 229-3139
Fax (757) 220-2475
joe@rjsassoc.com

919 CAPITOL LANDING ROAD

Williamsburg, VA



MAP

2018 Demographics:

	3 Miles	5 Miles	7 Miles
Total Population	25,862	60,763	86,537
Total Households	9,005	23,645	33,540
Median Household Income	\$63,683	\$76,942	\$78,195

RJS & Associates. Inc.

Commercial Real Estate
Brokerage

423 N. Boundary Street, Ste 200
Williamsburg, Virginia 23185-5629



For more Information

Contact:

Joseph P. Singley

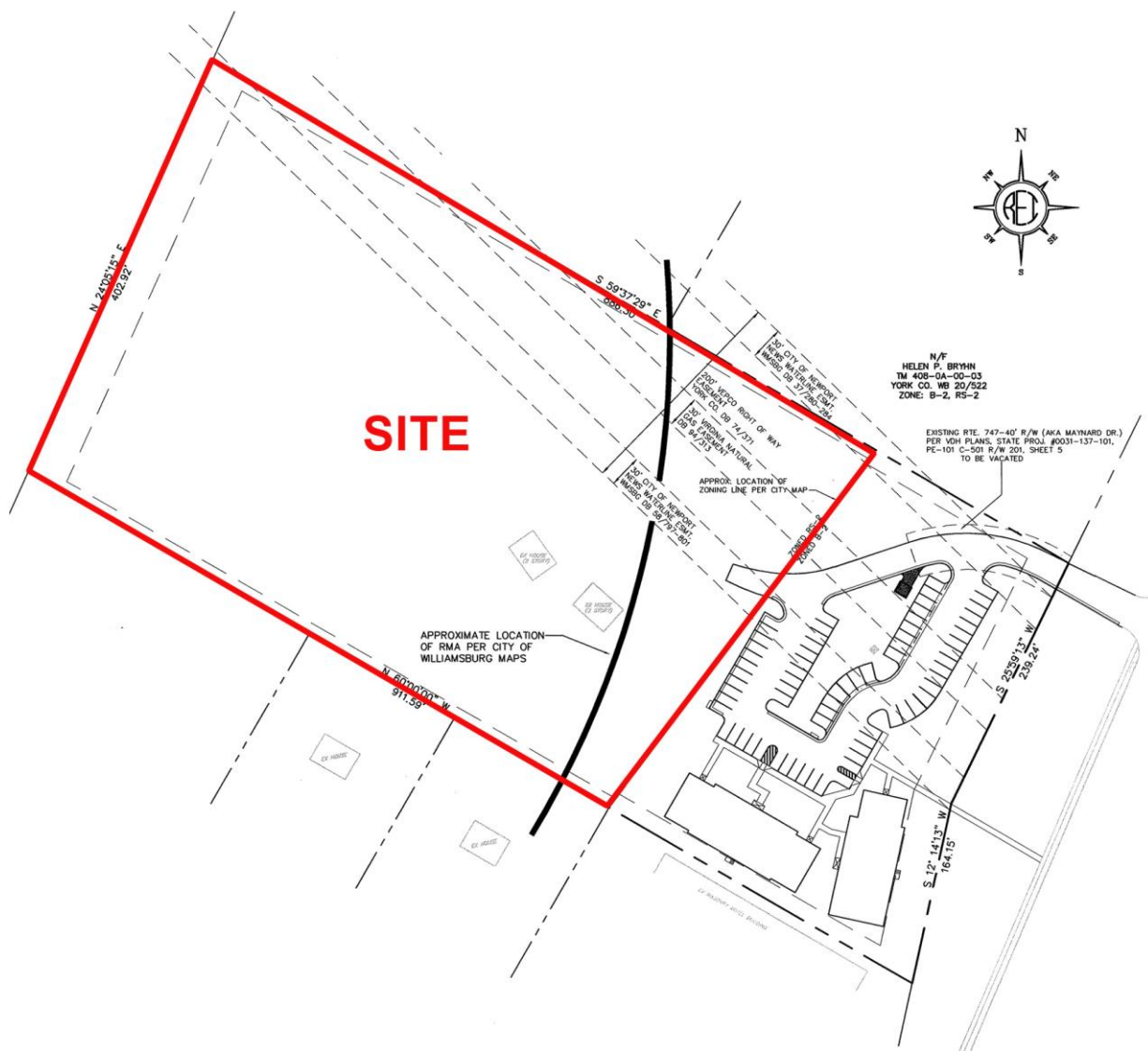
(757) 229-3139

Fax (757) 220-2475

joe@rjsassoc.com

919 CAPITOL LANDING ROAD

Williamsburg, VA



SITE PLAN

RJS & Associates. Inc.

Commercial Real Estate
Brokerage

423 N. Boundary Street, Ste 200
Williamsburg, Virginia 23185-5629

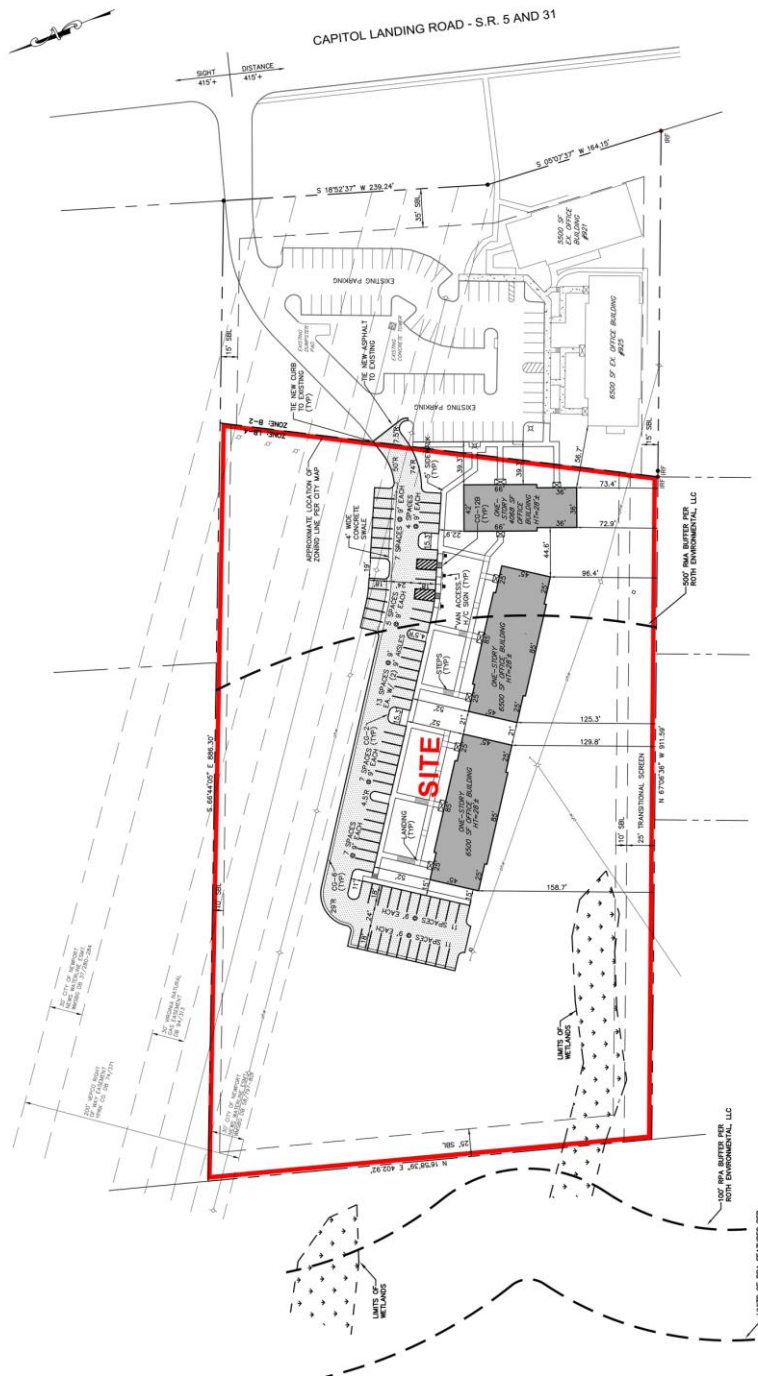


For more Information
Contact:

Joseph P. Singley
(757) 229-3139
Fax (757) 220-2475
joe@rjsassoc.com

919 CAPITOL LANDING ROAD

Williamsburg, VA



SITE PLAN

RJS & Associates. Inc.
Commercial Real Estate
Brokerage
423 N. Boundary Street, Ste 200
Williamsburg, Virginia 23185-5629



**For more Information
Contact:**
Joseph P. Singley
(757) 229-3139
Fax (757) 220-2475
joe@rjsassoc.com