

Commercial Property FOR SALE



601 E. ROCHAMBEAU DRIVE

Williamsburg, VA 23188

- The property is conveniently located off of Interstate 64 and Route 199 in the Lightfoot area of Williamsburg. This area has become a regional retail hub for the Williamsburg market and its neighboring counties.
- The property is situated between Williamsburg Ford and the Great Wolf Lodge along Rochambeau Road.
- Super Wal-Mart, Lowe's, Home Depot, the Williamsburg Pottery, and the new Sentara Williamsburg Regional Medical Center are all within one mile of the property.

ACREAGE:

± 21.5 acres

ZONING:

EO, Economic Opportunity

UTILITIES:

Public water and sewer available to the site

PRICE:

\$ 1,800,000

RJS & Associates. Inc.

Commercial Real Estate
Brokerage

423 N. Boundary Street, Ste
200

Williamsburg, Virginia 23185-5629

RJS
& ASSOCIATES, INC.

For more Information

Contact:

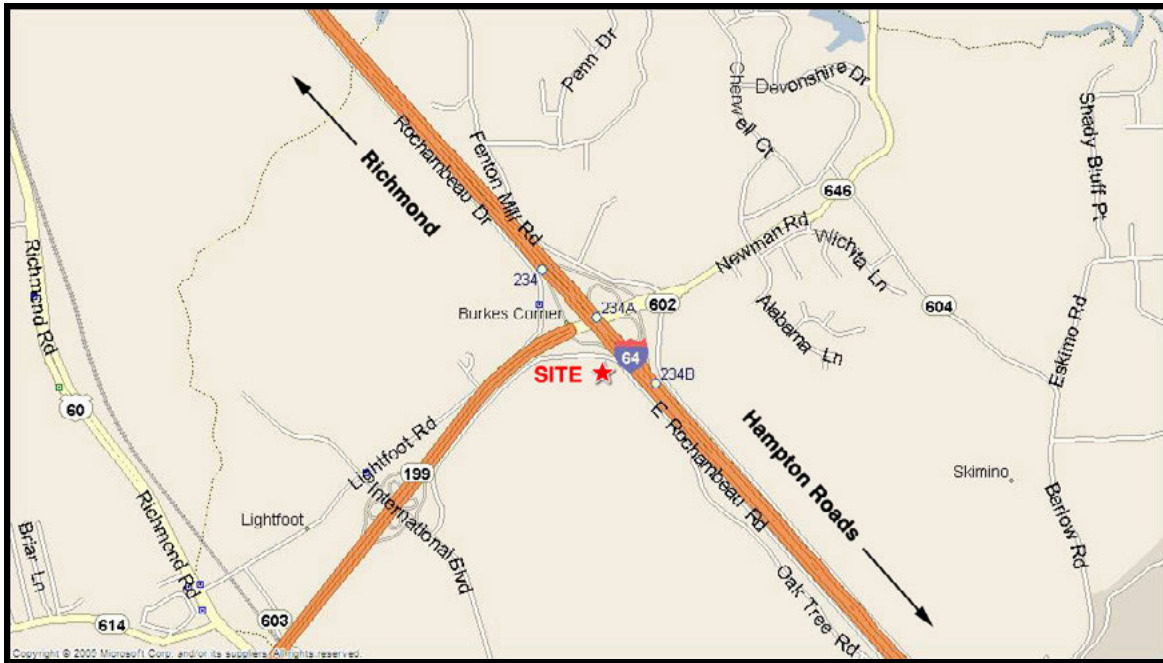
Robert J. Singley, Jr. CCIM

(757) 229-3139

Fax (757) 220-2475

rjsjr@rjsassoc.com

601 E. ROCHAMBEAU
 Williamsburg, VA 23188



MAP

2014 Demographics:

	3 Miles	5 Miles	7 Miles
Total Population:	12,613	33,259	66,378
Total Households:	5,162	13,556	25,291
Median Household Income:	\$57,723	\$60,966	\$64,227

Traffic Counts (VDOT 2012):

Interstate 64 Exit 234

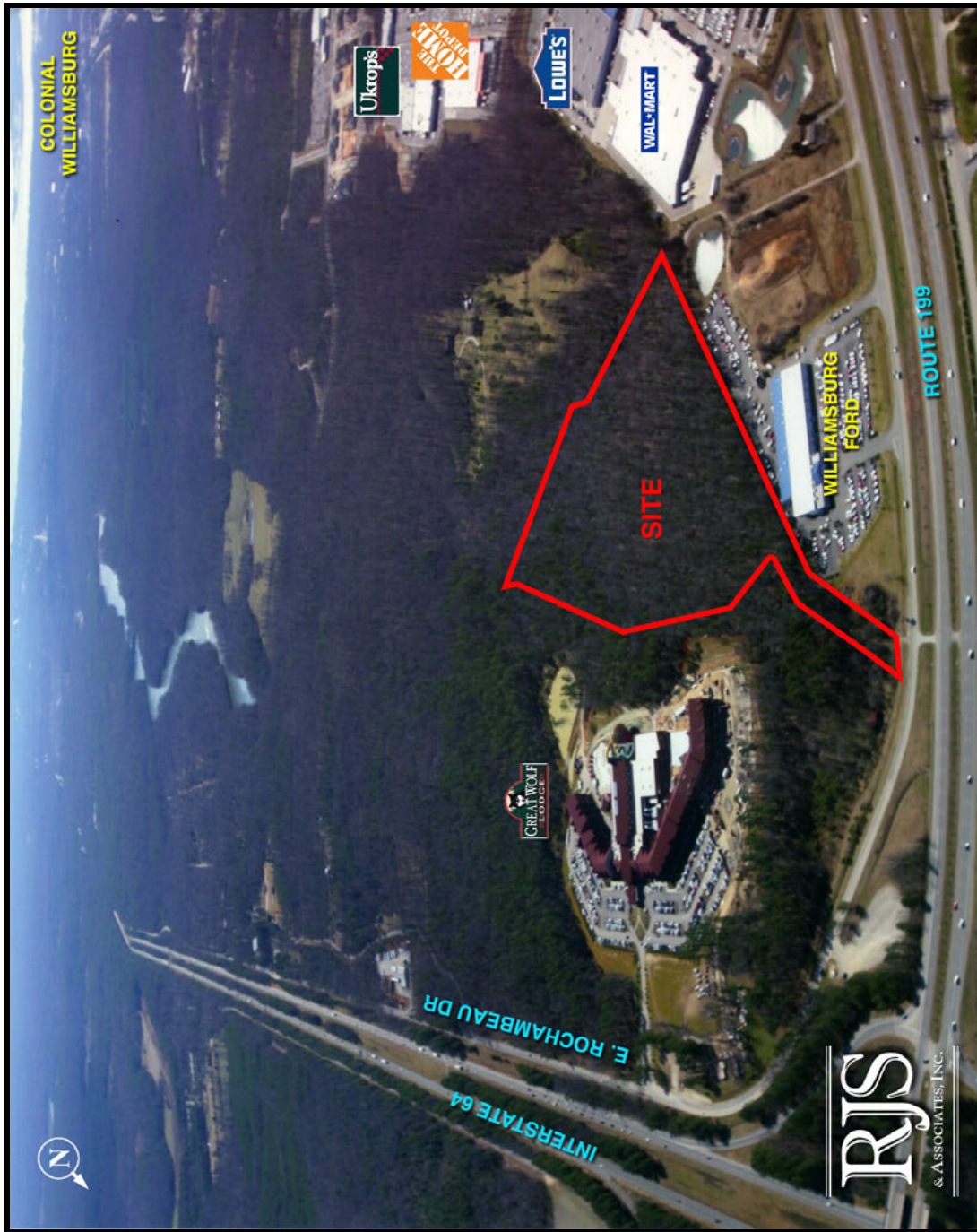
- Traveling West is 57,000 per day
- Traveling East is 58,000 per day

RJS & Associates. Inc.
 Commercial Real Estate
 Brokerage
 423 N. Boundary Street, Ste 200
 Williamsburg, Virginia 23185-5629



For more Information
Contact:
Robert J. Singley, Jr. CCIM
(757) 229-3139
Fax (757) 220-2475
rjsjr@rjsassoc.com

601 E. ROCHAMBEAU
Williamsburg, VA 23188



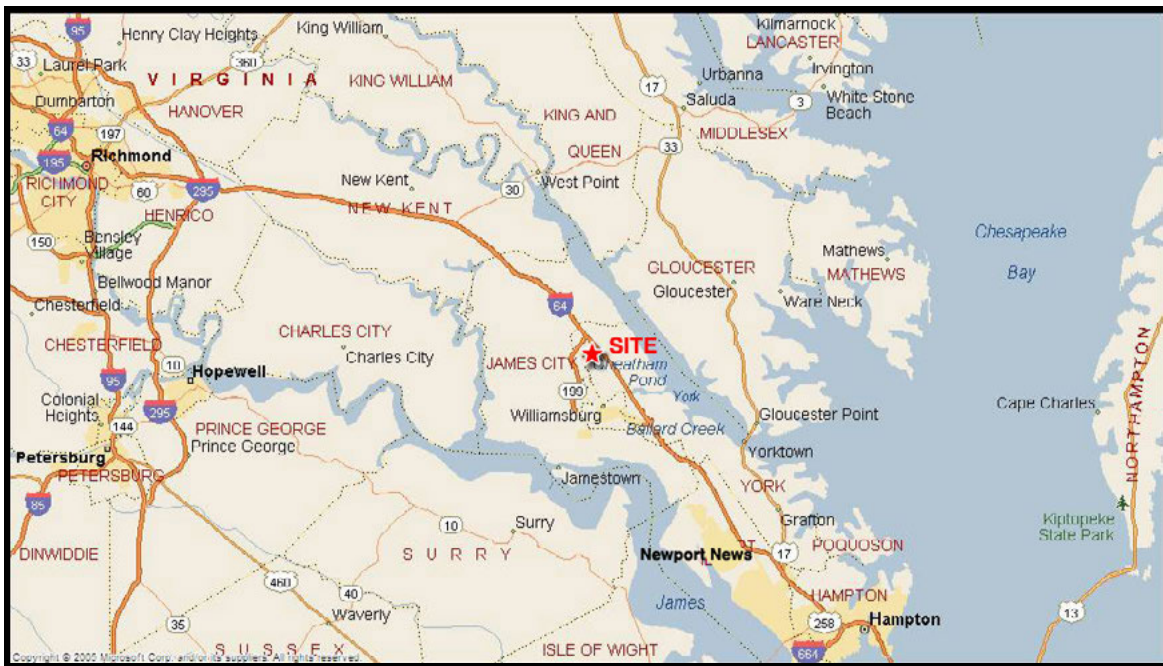
AERIAL

RJS & Associates. Inc.
Commercial Real Estate
Brokerage
423 N. Boundary Street, Ste 200
Williamsburg, Virginia 23185-5629



For more Information
Contact:
Robert J. Singley, Jr. CCIM
(757) 229-3139
Fax (757) 220-2475
rjsjr@rjsassocs.com

601 E. ROCHAMBEAU
Williamsburg, VA 23188



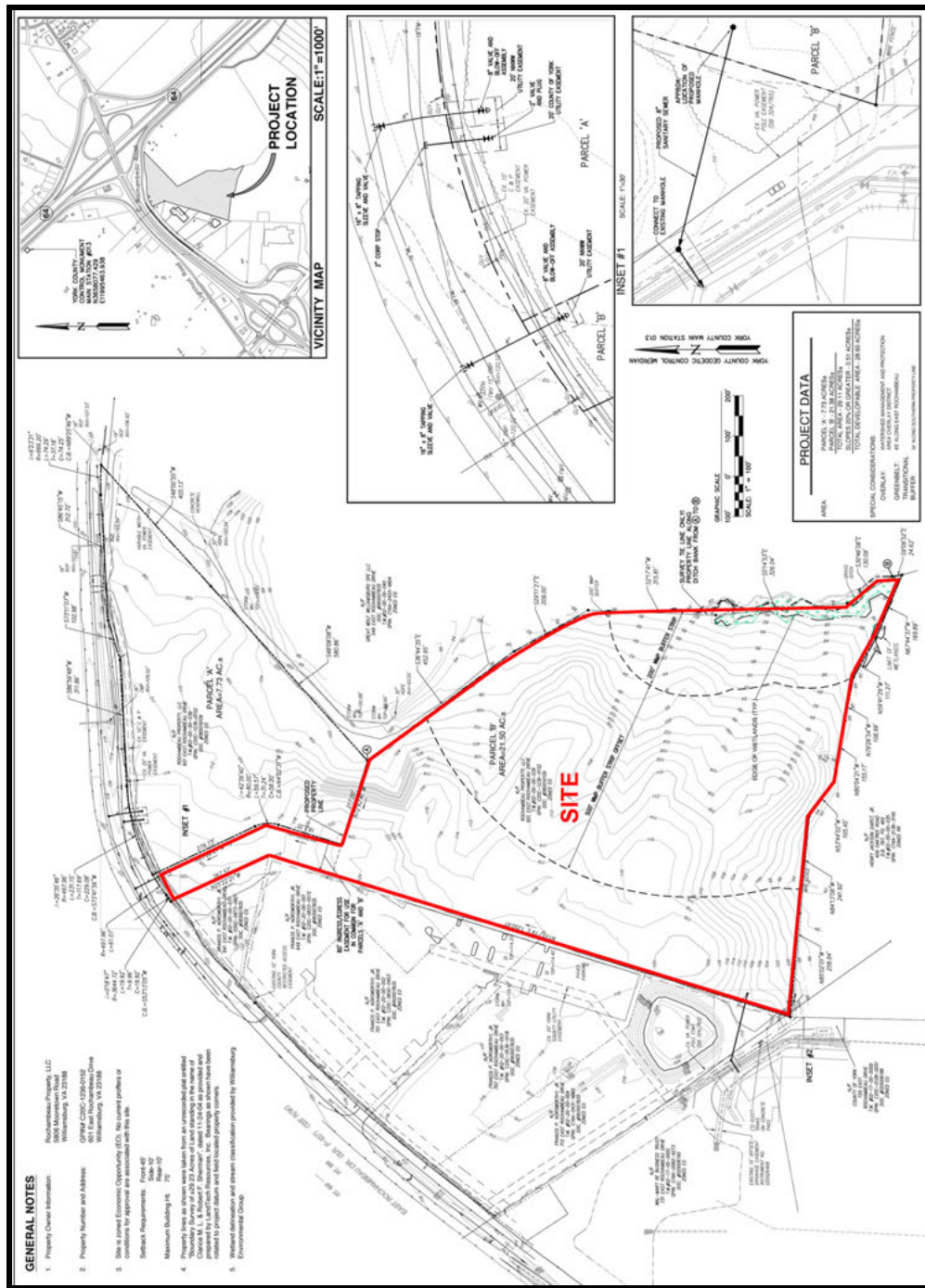
MAPS

RJS & Associates. Inc.
Commercial Real Estate
Brokerage
423 N. Boundary Street, Ste 200
Williamsburg, Virginia 23185-5629



For more Information
Contact:
Robert J. Singley, Jr. CCIM
(757) 229-3139
Fax (757) 220-2475
rjsjr@rjsassoc.com

601 E. ROCHAMBEAU
Williamsburg, VA 23188



SITEMAP

RJS & Associates, Inc.
Commercial Real Estate
Brokerage
423 N. Boundary Street, Ste 200
Williamsburg, Virginia 23185-5629



For more Information
Contact:
Robert J. Singley, Jr. CCIM
(757) 229-3139
Fax (757) 220-2475
rjsjr@rjsassoc.com