

NORGE CROSSING OUTPARCELS FOR SALE



NORGE CROSSING

Williamsburg, VA 23188

- Outparcels for sale in front of the Norge Crossing Shopping Center located at the corner of the signalized intersection of Richmond Road and Croaker Road.
- Norge Crossing Shopping Center is anchored by Farm Fresh and Tractor Supply.
- Directly across Richmond Road is a planned ± 52 acre mixed use development, which will be comprised of 175 residential units, 30,000 SF of commercial/office space, and a 90,000 SF assisted living facility.
- Other area retailers include CVS, Food Lion, C&F Bank and Old Point National Bank.

Parcel	Acreage	Price
1	1.19	\$400,000
2	1.51	\$655,000
3	1.15	\$595,000
6	20.23	\$3,500,000

ZONING:
B-1 General Business

RJS & Associates. Inc.

Commercial Real Estate
Brokerage

423 N. Boundary Street, Ste 200
Williamsburg, Virginia 23185-5629



For more Information
Contact:

Robert J. Singley, Jr. CCIM

(757) 229-3139

Fax **(757) 220-2475**

rjsjr@rjsassoc.com

NORGE CROSSING

Williamsburg, VA 23188



MAP

- ± 2 Miles Southwest of Interstate 64 via Croaker/I64 interchange
- ± 3 Miles Northwest from Rt. 199 & Rt. 60 intersection
- Traffic count at Richmond Road and Croaker Road ± 20,000 cars/day.
- 2014 Demographics

	3 Miles	5 Miles	7 Miles
Total Population:	10,879	28,451	44,864
Total Households:	4,260	11,099	18,123
Median Household Income:	\$64,865	\$63,115	\$65,110

RJS & Associates. Inc.

Commercial Real Estate
Brokerage

423 N. Boundary Street, Ste 200
Williamsburg, Virginia 23185-5629



For more Information
Contact:

Robert J. Singley, Jr. CCIM

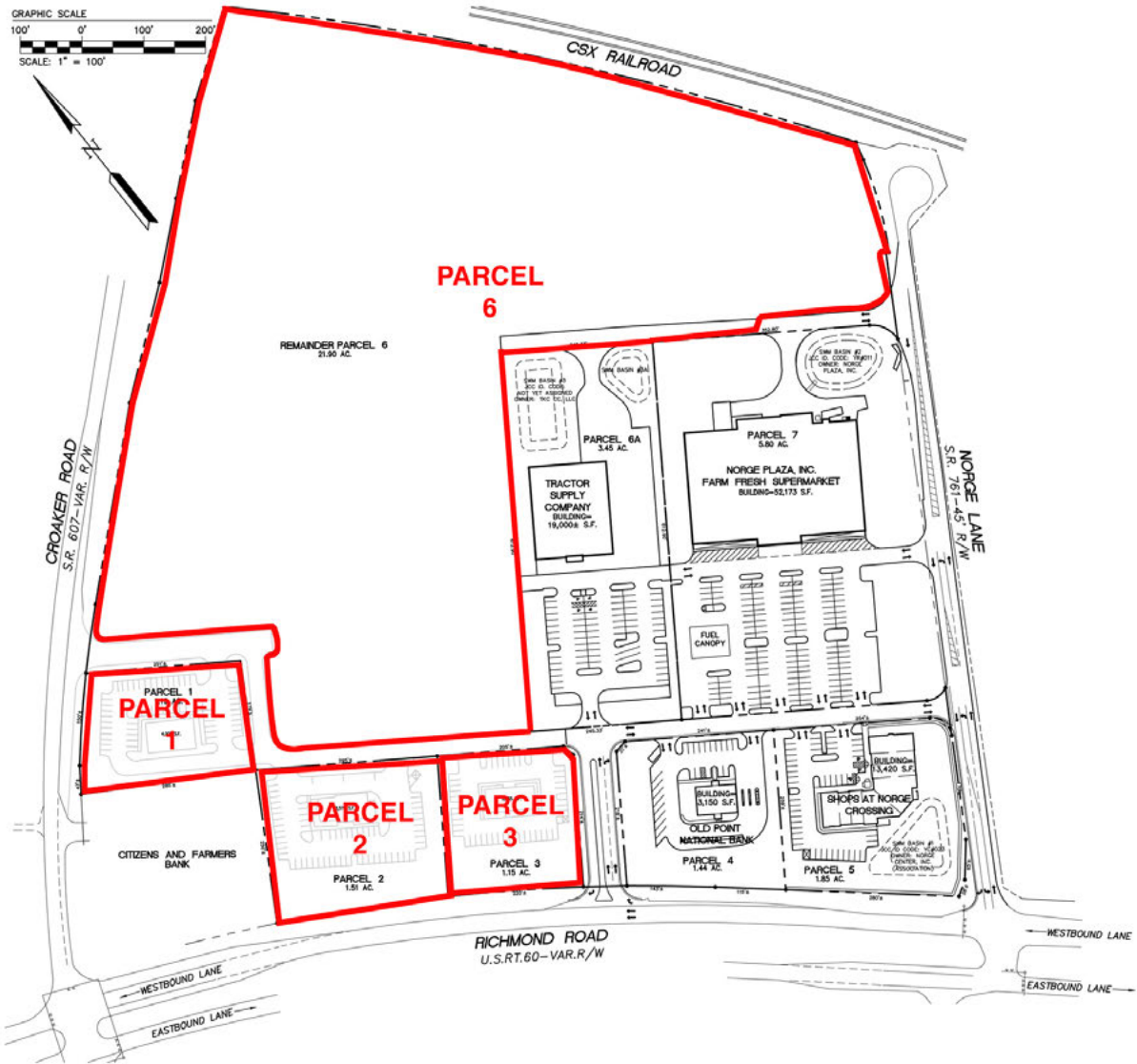
(757) 229-3139

Fax (757) 220-2475

rjsjr@rjsassoc.com

NORGE CROSSING

Williamsburg, VA 23188



PLAT

RJS & Associates. Inc.
Commercial Real Estate
Brokerage
423 N. Boundary Street, Ste 200
Williamsburg, Virginia 23185-5629



For more Information
Contact:
Robert J. Singley, Jr. CCIM
(757) 229-3139
Fax (757) 220-2475
rjsjr@rjsassoc.com

NORGE CROSSING

Williamsburg, VA 23188



AERIAL

RJS & Associates. Inc.

Commercial Real Estate
Brokerage

423 N. Boundary Street, Ste 200
Williamsburg, Virginia 23185-5629



For more Information
Contact:

Robert J. Singley, Jr. CCIM

(757) 229-3139

Fax (757) 220-2475

rjsjr@rjsassoc.com