

FOR SALE

OFFICE/INDUSTRIAL BUILDING

3737 & 3741 STRAWBERRY PLAINS ROAD • WILLIAMSBURG, VA 23185



PROPERTY FEATURES

Land Size: ± 1 ACRE

Building Size: ± 8,400 SF

Asking Price: \$600,000

Zoning: LB (Limited Business)

PROPERTY HIGHLIGHTS

- Ideal location for warehouse/office.
- Building is situated on a +/- 1 acre parcel of land centrally located in the greater Williamsburg Area.
- Property has easy access to Route 199.
- Building consists of ±1,800 SF of conditioned office space and ±6,600 SF of warehouse space. Warehouse consists of four grade level drive-in docks.
- Building can be easily divisible to support multiple tenants.
- Close proximity to Colonial Williamsburg and the College of William and Mary.
- One mile from New Town, a ± 365 acre mixed-use development located at the intersection of Monticello Avenue and Ironbound Road.



Commercial Real Estate Brokerage
423 N. Boundary Street, Suite 200
Williamsburg, VA 23185
www.rjsassocs.com

Joseph P. Singley
P / 757.229.3139
E / joe@rjsassocs.com

FOR SALE

OFFICE/INDUSTRIAL BUILDING

3737 & 3741 STRAWBERRY PLAINS ROAD • WILLIAMSBURG, VA 23185



2019 DEMOGRAPHICS

	3 MILE	5 MILE	7 MILE
POPULATION:	4,314	40,072	73,958
HOUSEHOLDS:	1,852	14,682	28,019
MEDIAN HOUSEHOLD INCOME:	\$91,775	\$76,337	\$77,502



Commercial Real Estate Brokerage
423 N. Boundary Street, Suite 200
Williamsburg, VA 23185
www.rjsassocs.com

Joseph P. Singley
P / 757.229.3139
E / joe@rjsassocs.com

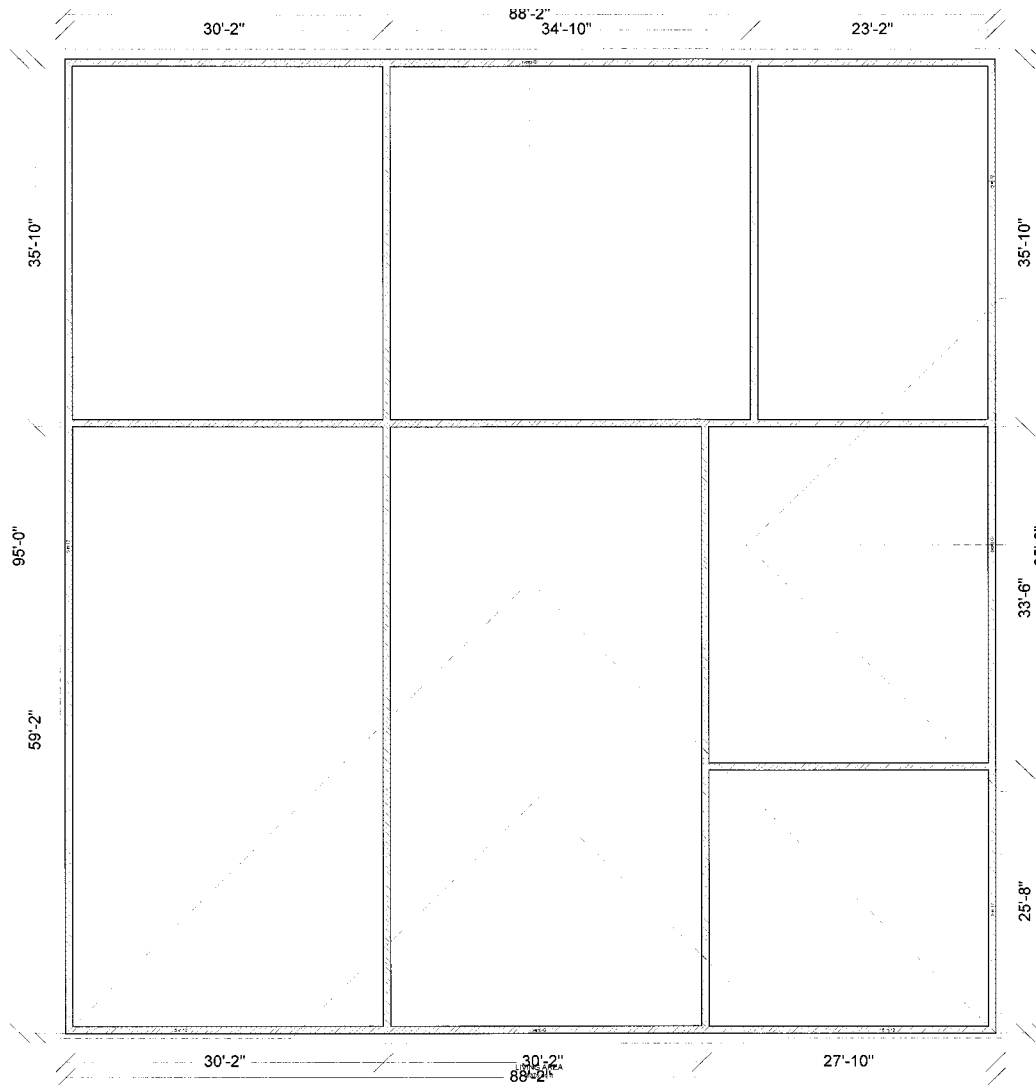
FOR SALE

OFFICE/INDUSTRIAL BUILDING

3737 & 3741 STRAWBERRY PLAINS ROAD • WILLIAMSBURG, VA 23185



FLOOR LAYOUT



Commercial Real Estate Brokerage
423 N. Boundary Street, Suite 200
Williamsburg, VA 23185
www.rjsassocs.com

Joseph P. Singley
P / 757.229.3139
E / joe@rjsassocs.com