

# OFFICE BUILDING FOR SALE

## ±2,400 SF

3901 MIDLANDS ROAD • WILLIAMSBURG, VA

## HIGHLIGHTS

ASKING PRICE: \$315,000

SF: ±2,400 SF

ACRES: ±0.6

ZONING: LB (Limited Business)

YEAR BUILT: 1996

PARKING SPACES: 12

## PROPERTY FEATURES

- Excellent office opportunity.
- Two-story Colonial office building centrally located in Williamsburg off of Strawberry Plains Road.
- Easy Access to Route 199 and Monticello Avenue.
- ± 1/2 mile from New Town and Williamsburg-James City County Courthouse at the intersection of Monticello Avenue and Ironbound Road.
- 1/2 mile from the intersection of Monticello Avenue and Ironbound Road where New Town and Williamsburg-James City County Courthouse is located.



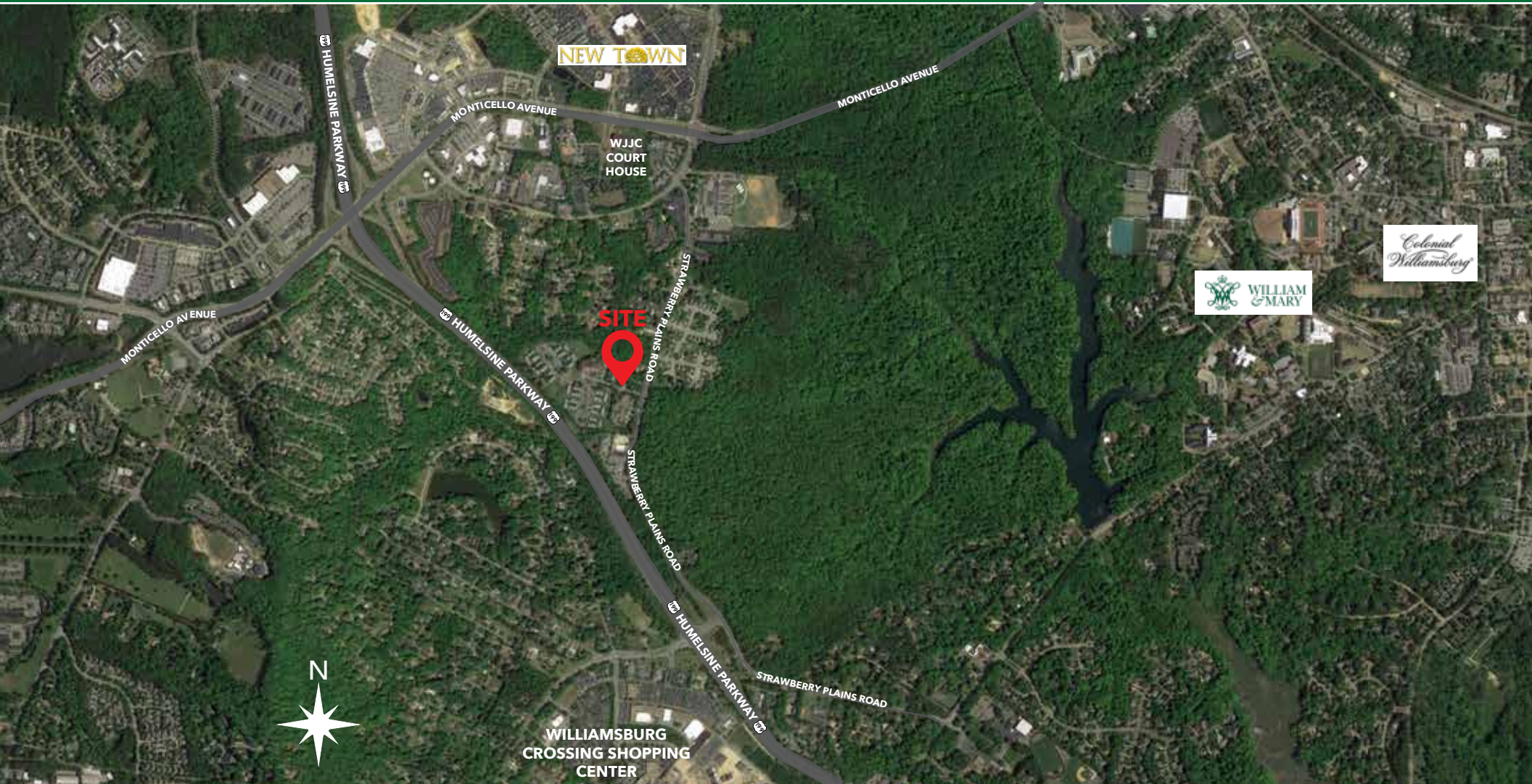
Commercial Real Estate Brokerage  
423 N. Boundary Street, Suite 200  
Williamsburg, VA 23185  
[www.rjsassoc.com](http://www.rjsassoc.com)

Joseph P. Singley  
P / 757.229.3139  
E / [joe@rjsassoc.com](mailto:joe@rjsassoc.com)

# OFFICE BUILDING FOR SALE

## ±2,400 SF

3901 MIDLANDS ROAD • WILLIAMSBURG, VA



Commercial Real Estate Brokerage  
423 N. Boundary Street, Suite 200  
Williamsburg, VA 23185  
[www.rjsassoc.com](http://www.rjsassoc.com)

Joseph P. Singley  
P / 757.229.3139  
E / [joe@rjsassoc.com](mailto:joe@rjsassoc.com)

# OFFICE BUILDING FOR SALE

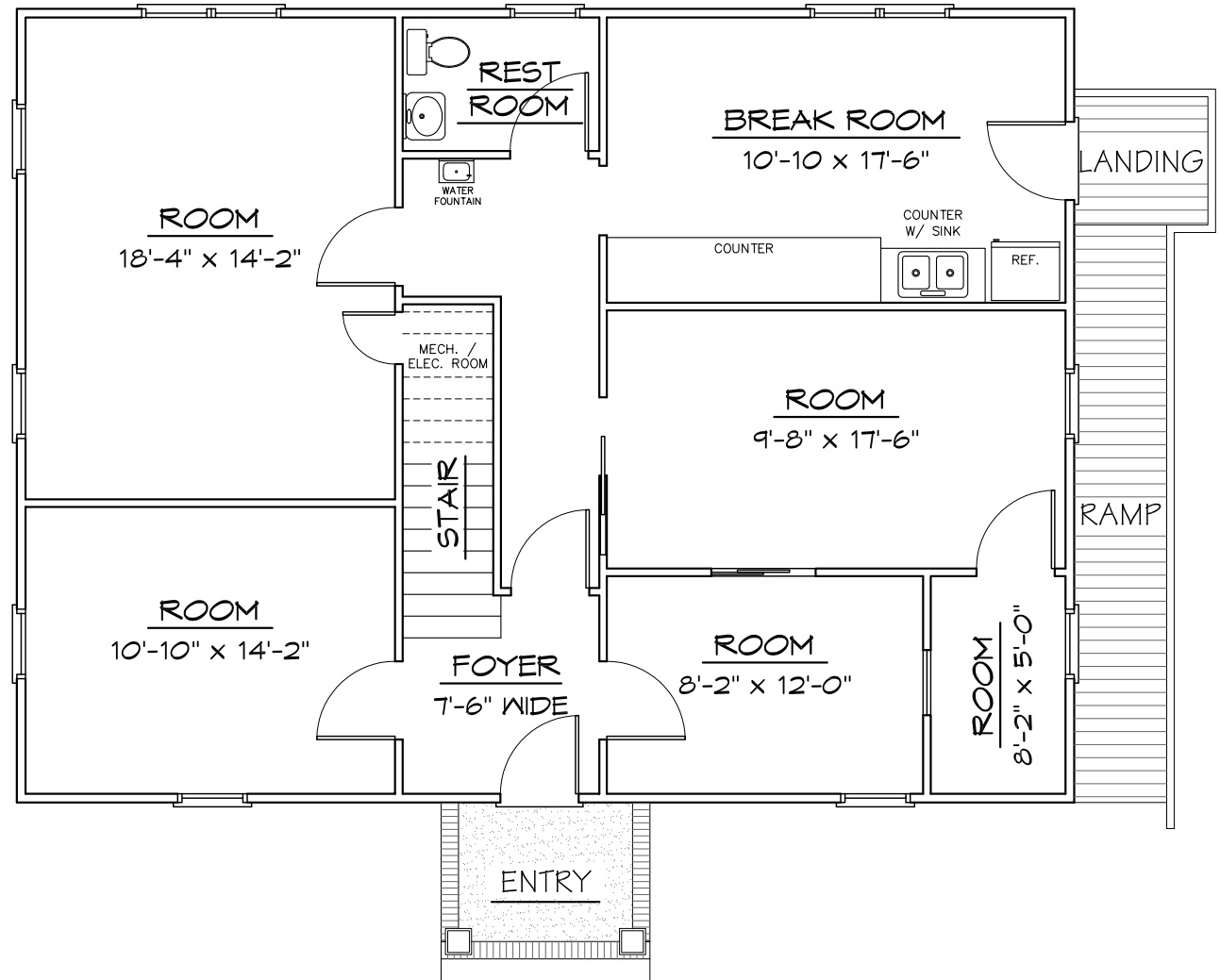
## ±2,400 SF

3901 MIDLANDS ROAD • WILLIAMSBURG, VA

### FIRST FLOOR

#### 1,234 SF

*Not to scale: for illustrative purposes only*



Commercial Real Estate Brokerage  
423 N. Boundary Street, Suite 200  
Williamsburg, VA 23185  
[www.rjsassocs.com](http://www.rjsassocs.com)

Joseph P. Singley  
P / 757.229.3139  
E / [joe@rjsassocs.com](mailto:joe@rjsassocs.com)

# OFFICE BUILDING FOR SALE

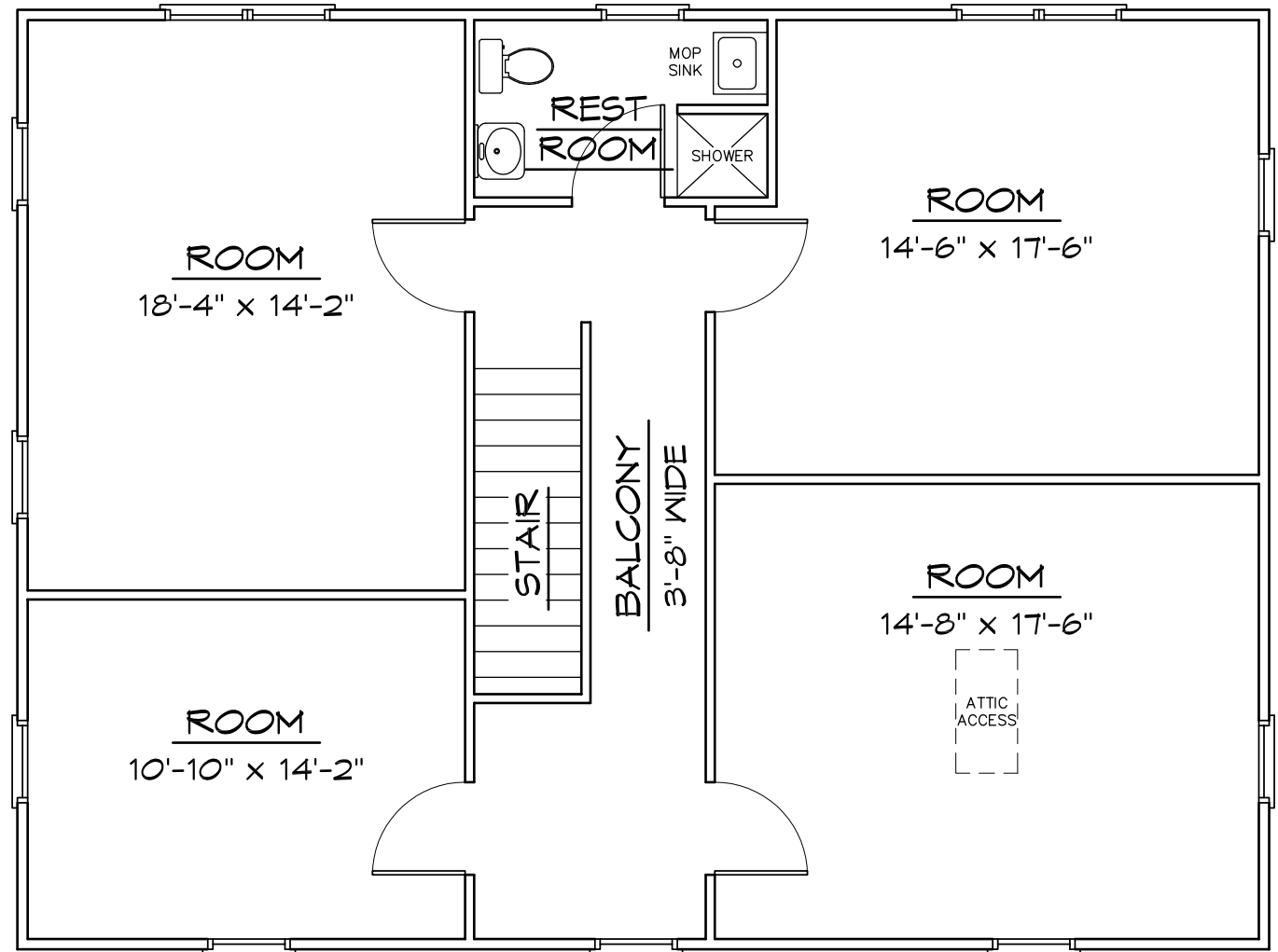
## ±2,400 SF

3901 MIDLANDS ROAD • WILLIAMSBURG, VA

### SECOND FLOOR

#### 1,197 SF

*Not to scale: for illustrative purposes only*

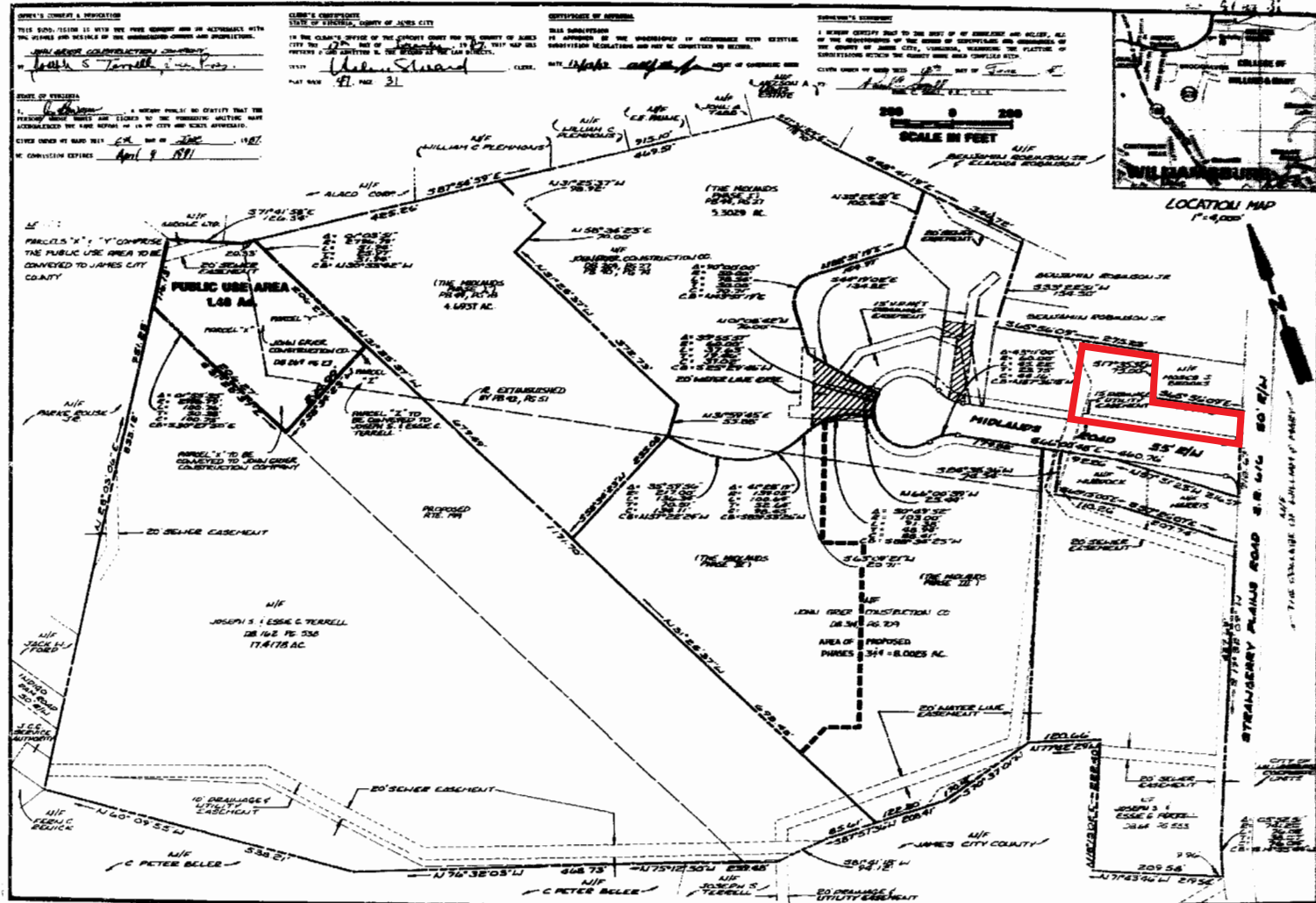


Commercial Real Estate Brokerage  
423 N. Boundary Street, Suite 200  
Williamsburg, VA 23185  
[www.rjsassoc.com](http://www.rjsassoc.com)

Joseph P. Singley  
P / 757.229.3139  
E / [joe@rjsassoc.com](mailto:joe@rjsassoc.com)

OFFICE BUILDING FOR SALE  
 ±2,400 SF  
 3901 MIDLANDS ROAD • WILLIAMSBURG, VA

PLAT



Commercial Real Estate Brokerage  
 423 N. Boundary Street, Suite 200  
 Williamsburg, VA 23185  
 www.rjsassocs.com

Joseph P. Singley  
 P / 757.229.3139  
 E / joe@rjsassocs.com